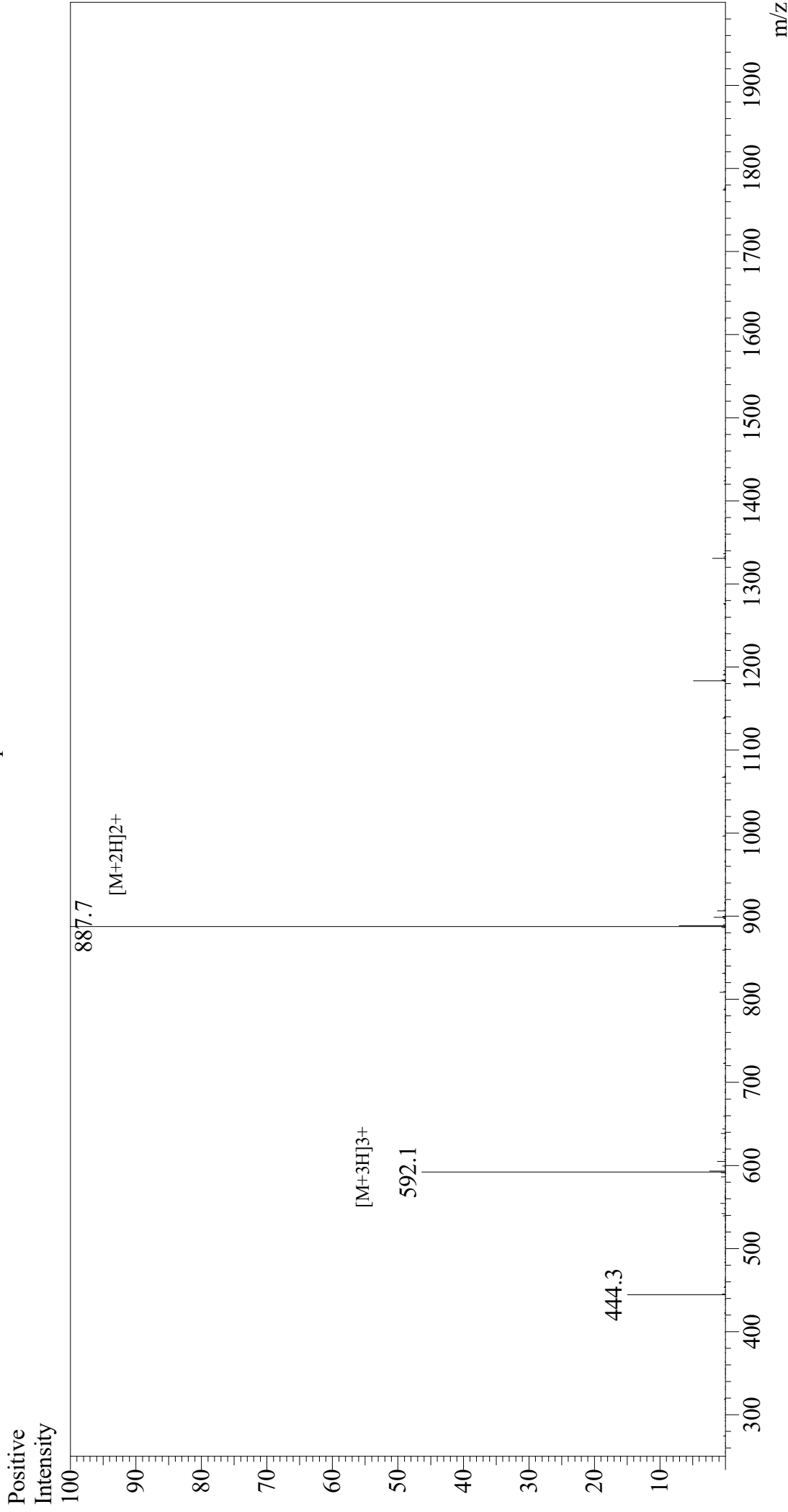


Mass Spectrum



Sample Information
Month-Day Processed : 05/12/21
Time Processed : 11:03:30 PM
Injection Volume : 0.4
Sample Name : OVA Peptide (323-339)
Cat No. : RP10610
Lot No. : E1940321E
Theoretical MW : 1773.91
Observed MW : 1773.4

Interface : ESI
Nebulizing Gas Flow : 1.5L/min
CDL Temp : 250
Block Temp : 200

Equipment : GK11010007
Interface Bias : +3.5 kV
Drying Gas Flow : 5 L/min
T.Flow : 0.2 ml/min
B.conc : 50%H₂O/50%MeOH