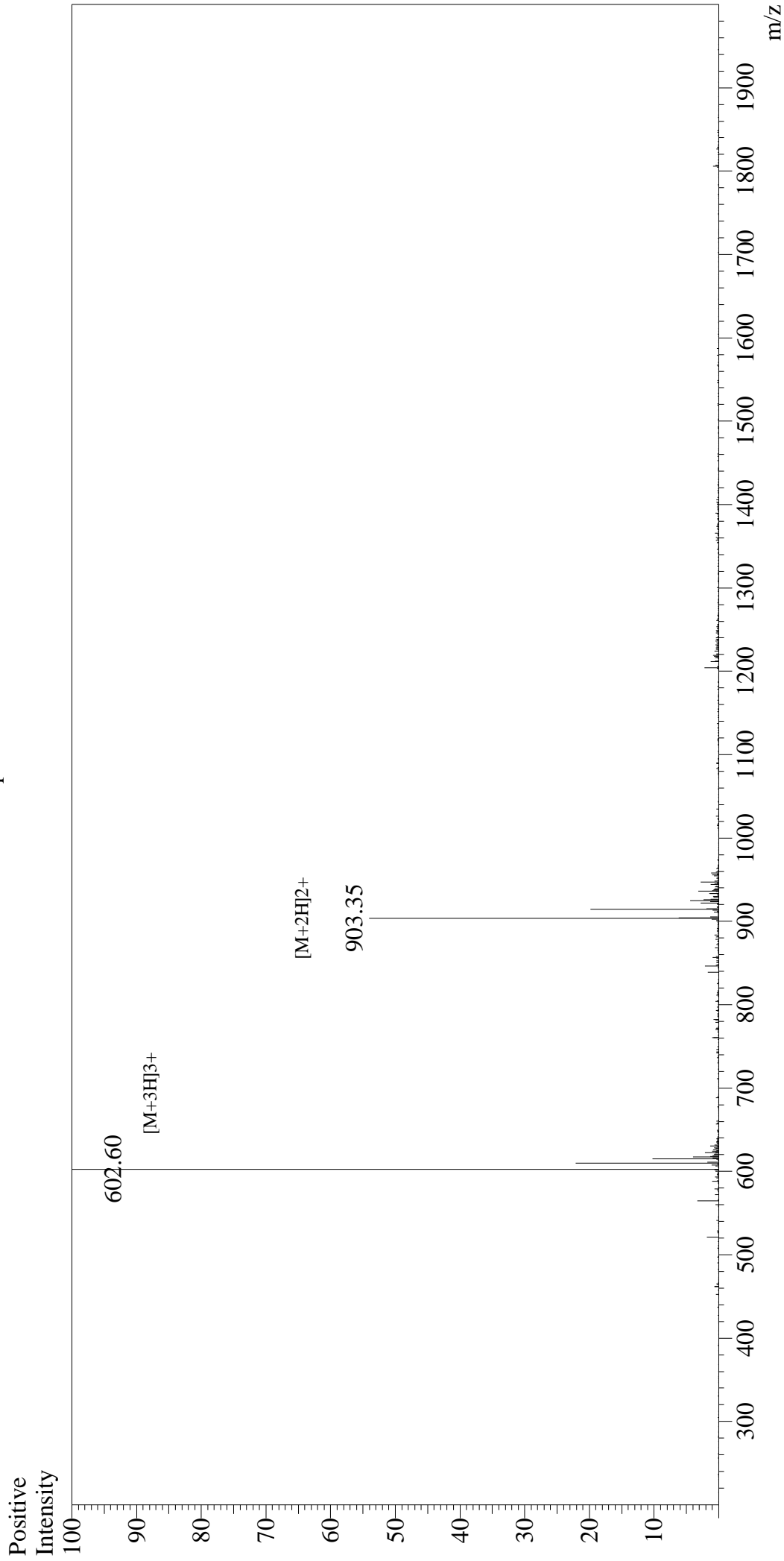


Mass Spectrum



Sample Information

User : Gary
Month-Day Processed : 10/01/16
Time Processed : 15:51:54
Injection Volume : 0.2
Sample Name : Moth Cytochrome C (MCC) (88-103)
Cat No. : RPI2808
Lot No. : PE0101609
Theoretical MW : 1805.05
Observed MW : 1804.80

Interface : ESI
Nebulizing Gas Flow : 1.5L/min
CDL Temp : 250°C
Block Temp : 200°C

Interface Bias : +4.5kV
Drying Gas Flow : 5 L/min
T.Flow : 0.2ml/min
B.conc : 50%H2O/50%MeOH