

Sample Name :Motilin, human, porcine  
 Cat No.: RP10527  
 Lot No.: E9680019J  
 Time Processed :16:48:45  
 Month-Day-Year Processed :10/18/2019

Pump A : 0.065% trifluoroacetic in 100% water (v/v)  
 Pump B : 0.05% trifluoroacetic in 100% acetonitrile (v/v)  
 Total Flow:1 ml/min  
 Wavelength:220 nm

<<LC Time Program>>

Time	Module	Command	Value
0.01	Pumps	Solvent B Conc.	5
25.00	Pumps	Solvent B Conc.	65
25.01	Pumps	Solvent B Conc.	95
31.00	Pumps	Solvent B Conc.	95
31.01	Pumps	Solvent B Conc.	5
40.00	Pumps	Solvent B Conc.	5
40.01	Controller	Stop	

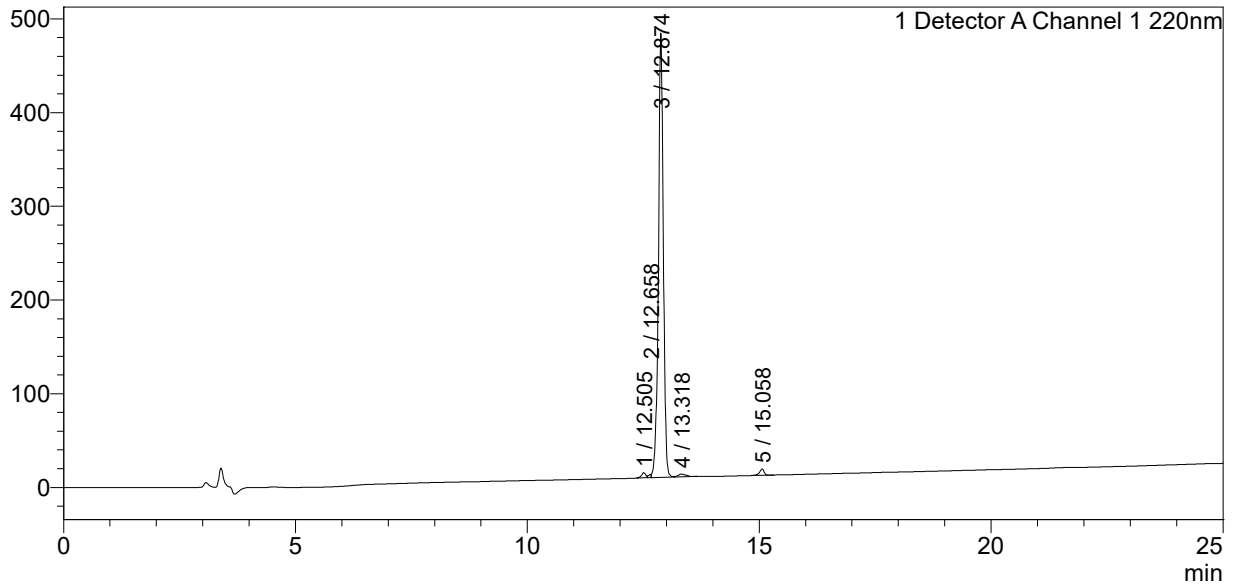
<<Column Performance>>

<Detector A>

Column : Inertsil ODS-3 4.6 x 250 mm  
 Equipment:ZJ19010324

### <Chromatogram>

mV



### <Peak Table>

Detector A Channel 1 220nm

Peak#	Ret. Time	Area	Height	Area%
1	12.505	32894	5466	0.910
2	12.658	13288	3399	0.368
3	12.874	3487369	474284	96.529
4	13.318	32880	2965	0.910
5	15.058	46322	6792	1.282
Total		3612753	492905	100.000