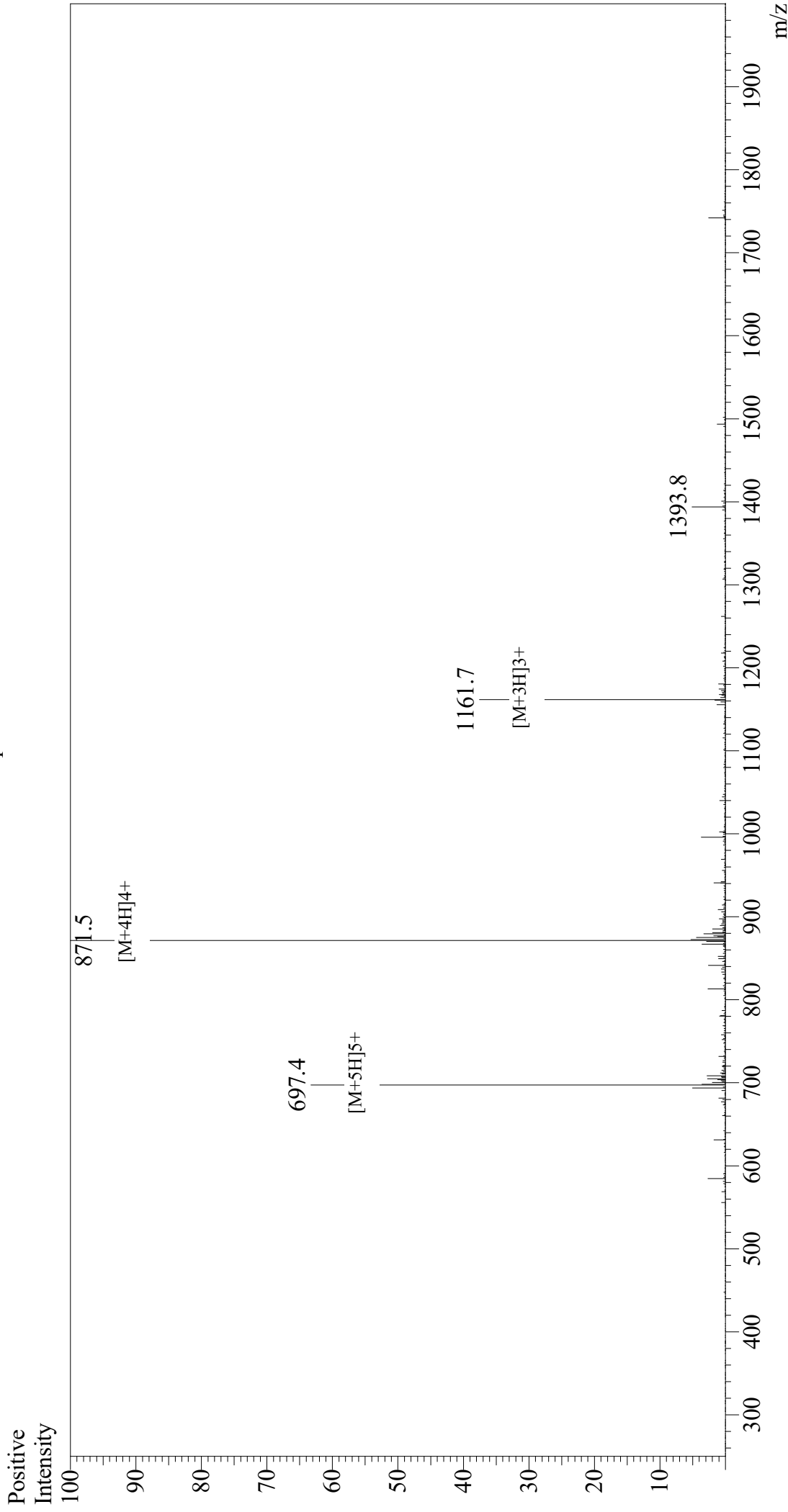


# Mass Spectrum



Sample Information  
Month-Day Processed : 01/27/21  
Time Processed : 4:55:31 AM  
Injection Volume : 0.6  
Sample Name : Glucagon (1-29), Human  
Cat No. : RP10772  
Lot No. : E0661421A  
Theoretical MW : 3482.80  
Observed MW : 3482.0

Interface : ESI  
Nebulizing Gas Flow : 1.5L/min  
CDL Temp : 250  
Block Temp : 200

Equipment : GK11010007  
Interface Bias : +3.5 kV  
Drying Gas Flow : 5 L/min  
T.Flow : 0.2 ml/min  
B.conc : 50%H2O/50%MeOH