

Sample Name :N-Formyl-Met-Ala-Ser
 Cat No. :RP10587
 Lot No. E4744819I
 Time Processed :9:53:46 AM
 Month-Day-Year Processed :09/19/19

Pump A : 0.065% trifluoroacetic in 100% water (v/v)
 Pump B : 0.05% trifluoroacetic in 100% acetonitrile (v/v)
 Total Flow:1 ml/min
 Wavelength:220 nm

<<LC Time Program>>

Time	Module	Command	Value
0.01	Pumps	Solvent B Conc.	5
25.00	Pumps	Solvent B Conc.	65
25.01	Pumps	Solvent B Conc.	95
27.00	Pumps	Solvent B Conc.	95
27.01	Pumps	Solvent B Conc.	5
35.00	Pumps	Solvent B Conc.	5
35.01	Controller	Stop	

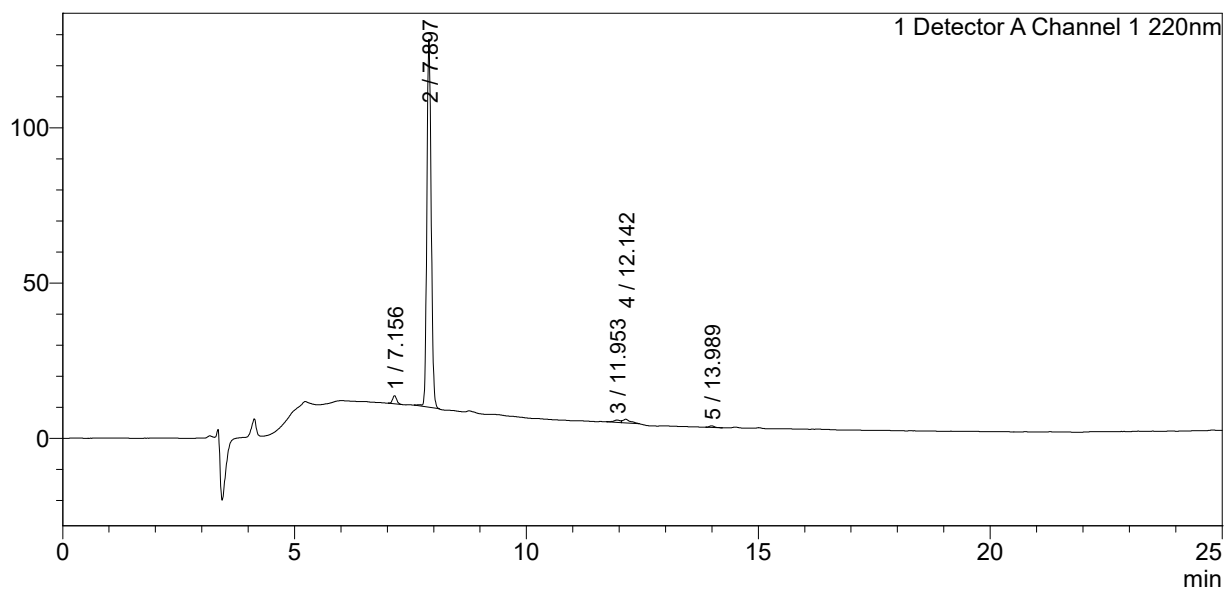
<<Column Performance>>

<Detector A>

Column : Inertsil ODS-3 4.6 x 250 mm
 Equipment: ZJ19010141

<Chromatogram>

mV



<Peak Table>

Detector A Channel 1 220nm

Peak#	Ret. Time	Area	Height	Area%
1	7.156	15345	2563	1.906
2	7.897	766154	118554	95.175
3	11.953	7496	759	0.931
4	12.142	12143	1145	1.508
5	13.989	3859	536	0.479
Total		804997	123556	100.000