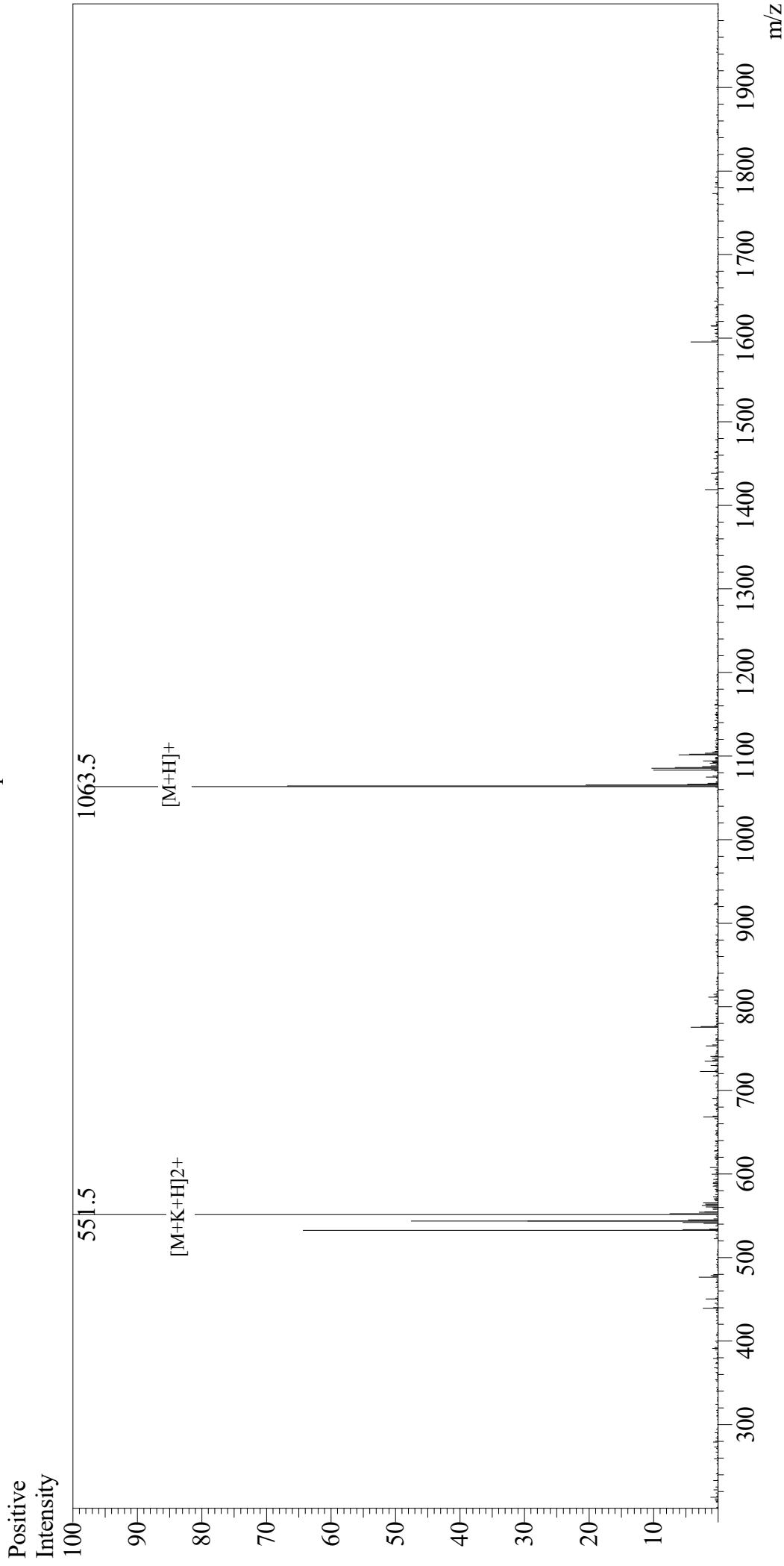


Mass Spectrum



Sample Information

User : Gary
Month-Day Processed : 02/24/19
Time Processed : 09:51:41 AM
Injection Volume : 0.2
Sample Name : Chemerin-9(149-157)
Cat No. : RP20248
Lot No. : PE0321902
Theoretical MW : 1063.17
Observed MW : 1064.0

Interface : ESI
Nebulizing Gas Flow : 1.5L/min
CDL Temp : 250
Block Temp : 200

Equipment : GK11010007
Interface Bias : +4.5kV
Drying Gas Flow : 5 L/min
T.Flow : 0.2ml/min
B.conc : 50%H2O/50%MeOH