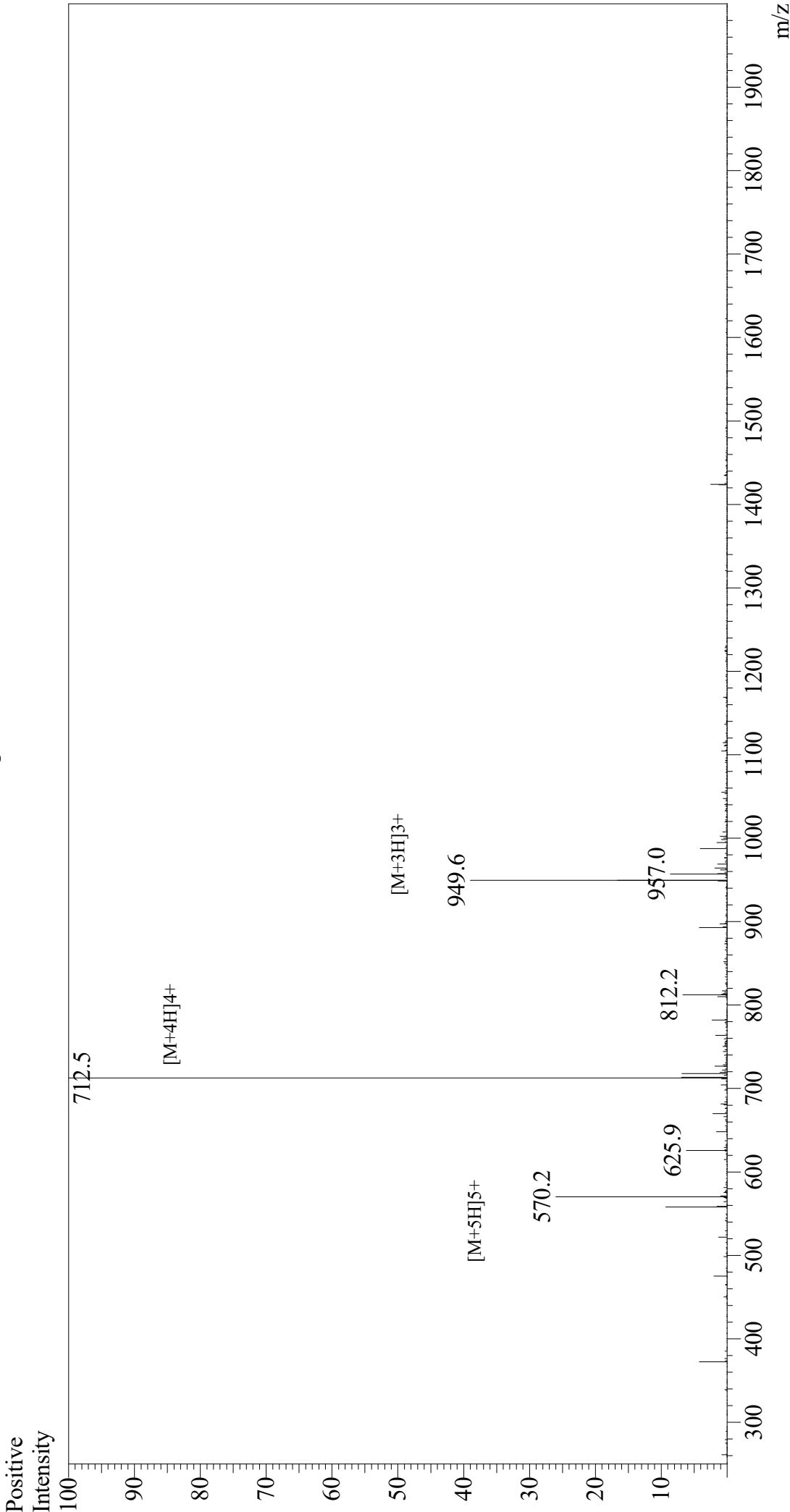


Mass Spectrum



Sample Information

Month-Day Processed : 11/12/20  
Time Processed : 05:08:27 PM  
Injection Volume : 0.3  
Sample Name : Melittin  
Cat No. : RP10290  
Lot No. : E6048520K  
Theoretical MW : 2846.46  
Observed MW : 2846.0

Interface : ESI  
Nebulizing Gas Flow : 1.5L/min  
CDL Temp : 250  
Block Temp : 200

Equipment : GK11010007  
Interface Bias : +3.5 kV  
Drying Gas Flow : 5 L/min  
T.Flow : 0.2 ml/min  
B.conc : 50%H<sub>2</sub>O/50%MeOH