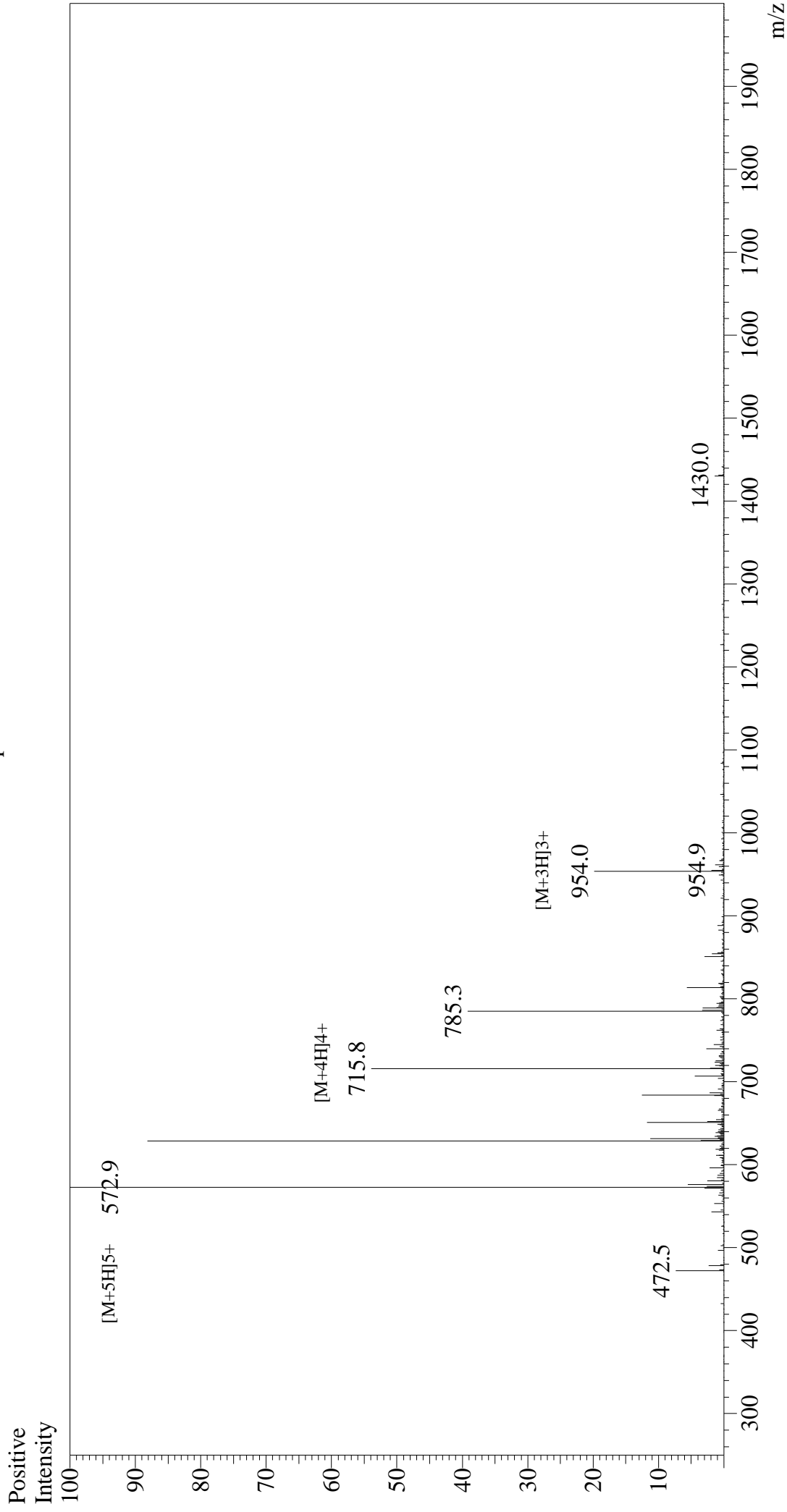


# Mass Spectrum



## Sample Information

Acquired by : Gary  
Month-Day Processed : 10/24/18  
Time Processed : 20:11:25  
Injection Volume : 0.2  
Sample Name : Gastrin-Releasing Peptide, human  
Cat. No. : RP10791  
Lot. No. : PE0491810  
Theoretical MW : 2859.30  
Observed MW : 2959.5

Interface : ESI  
Nebulizing Gas Flow : 1.5L/min  
CDL Temp : 250°C  
Block Temp : 200°C

Equipment : GK11010007  
Interface Bias : +4.5 kV  
Drying Gas Flow : 5 L/min  
T.Flow : 0.2 ml/min  
B.conc : 50% H2O/50% MeOH