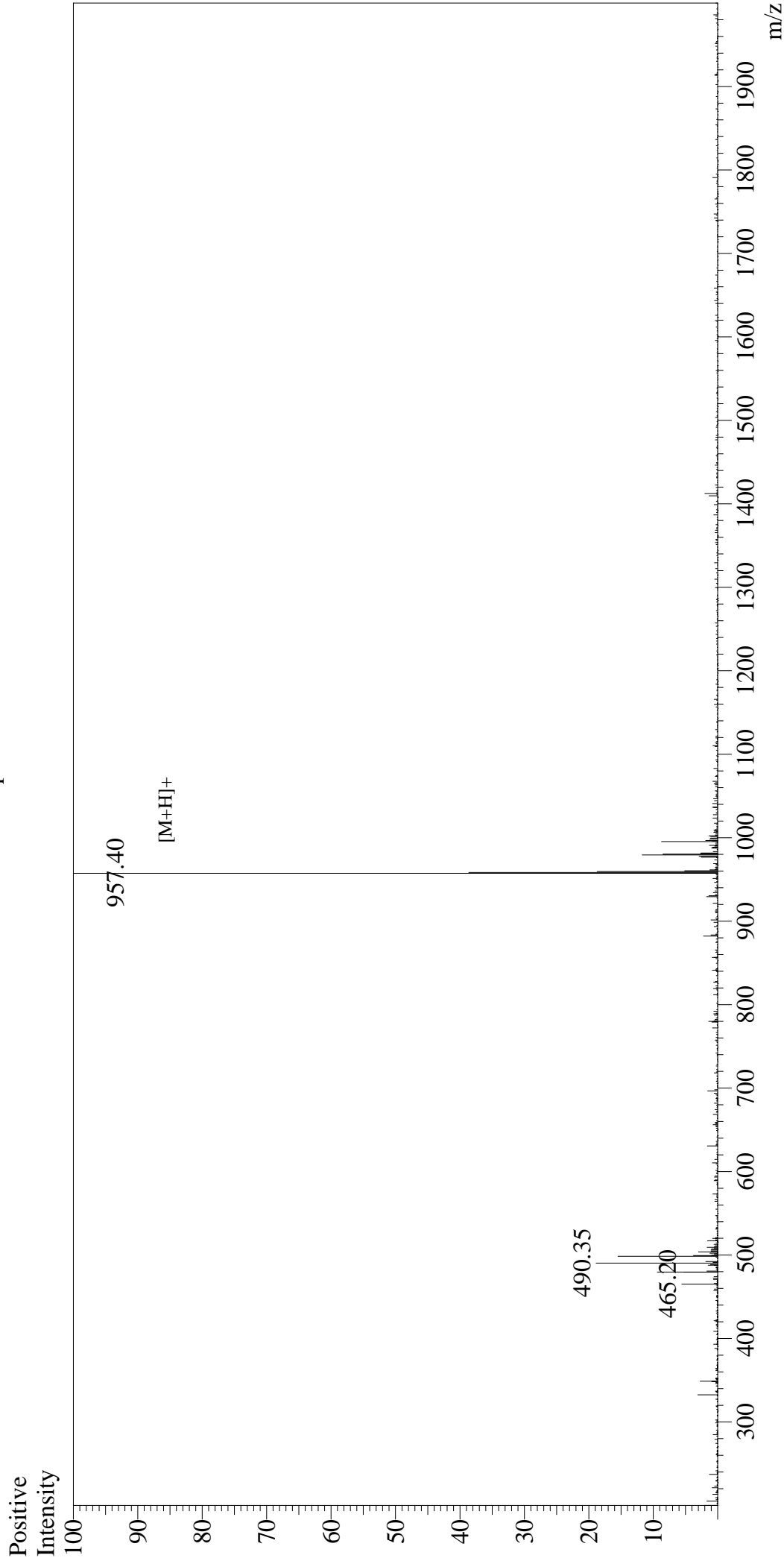


Mass Spectrum



Sample Information

User : Gary
Month-Day Processed : 08/31/17
Time Processed : 14:40:12
Injection Volume : 0.2
Sample Name : Crustacean Cardioactive Peptide (CCAP)
Cat No. : RP10572
Lot No. : PE6141708
Theoretical MW : 957.10
Observed MW : 956.40

Interface : ESI
Nebulizing Gas Flow : 1.5L/min
CDL Temp : 250 °C
Block Temp : 200 °C

Interface Bias : +4.5kV
Drying Gas Flow : 5 L/min
T.Flow : 0.2ml/min
B.conc : 50%H2O/50%MeOH