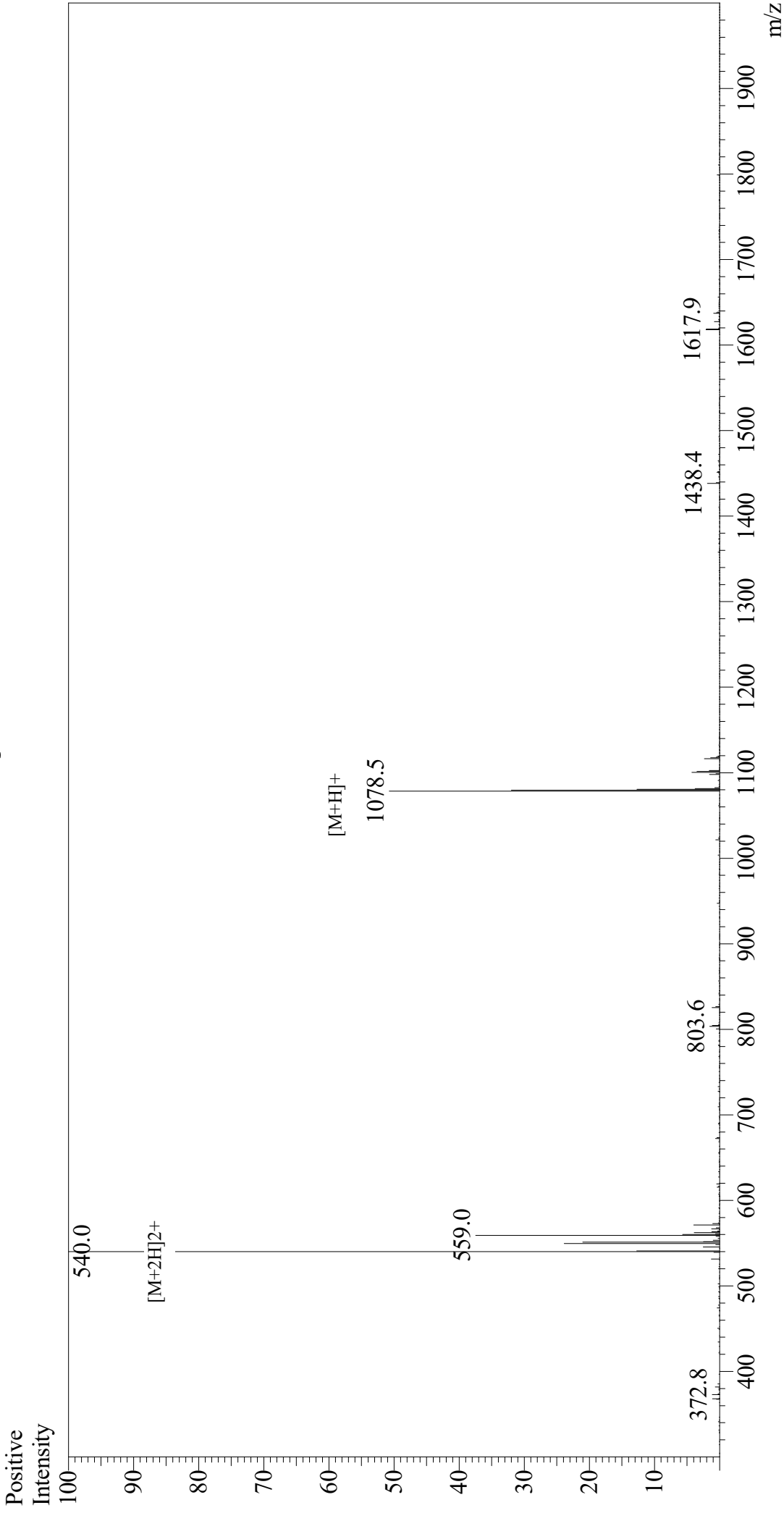


Mass Spectrum



Sample Information

Acquired by : Gary
Month-Day Processed : 06/07/19
Time Processed : 12:51:42 PM
Injection Volume : 0.3
Sample Name : NP (396-404)
Cat. No. : RP20090
Lot. No. : PE2011905
Theoretical MW : 1078.18
Observed MW : 1078.0

Interface : ESI
Nebulizing Gas Flow : 1.5L/min
CDL Temp : 250
Block Temp : 200

Equipment : GK11010007
Interface Bias : +4.5 kV
Drying Gas Flow : 5 L/min
T.Flow : 0.2 ml/min
B.conc : 50% H₂O/50% MeOH