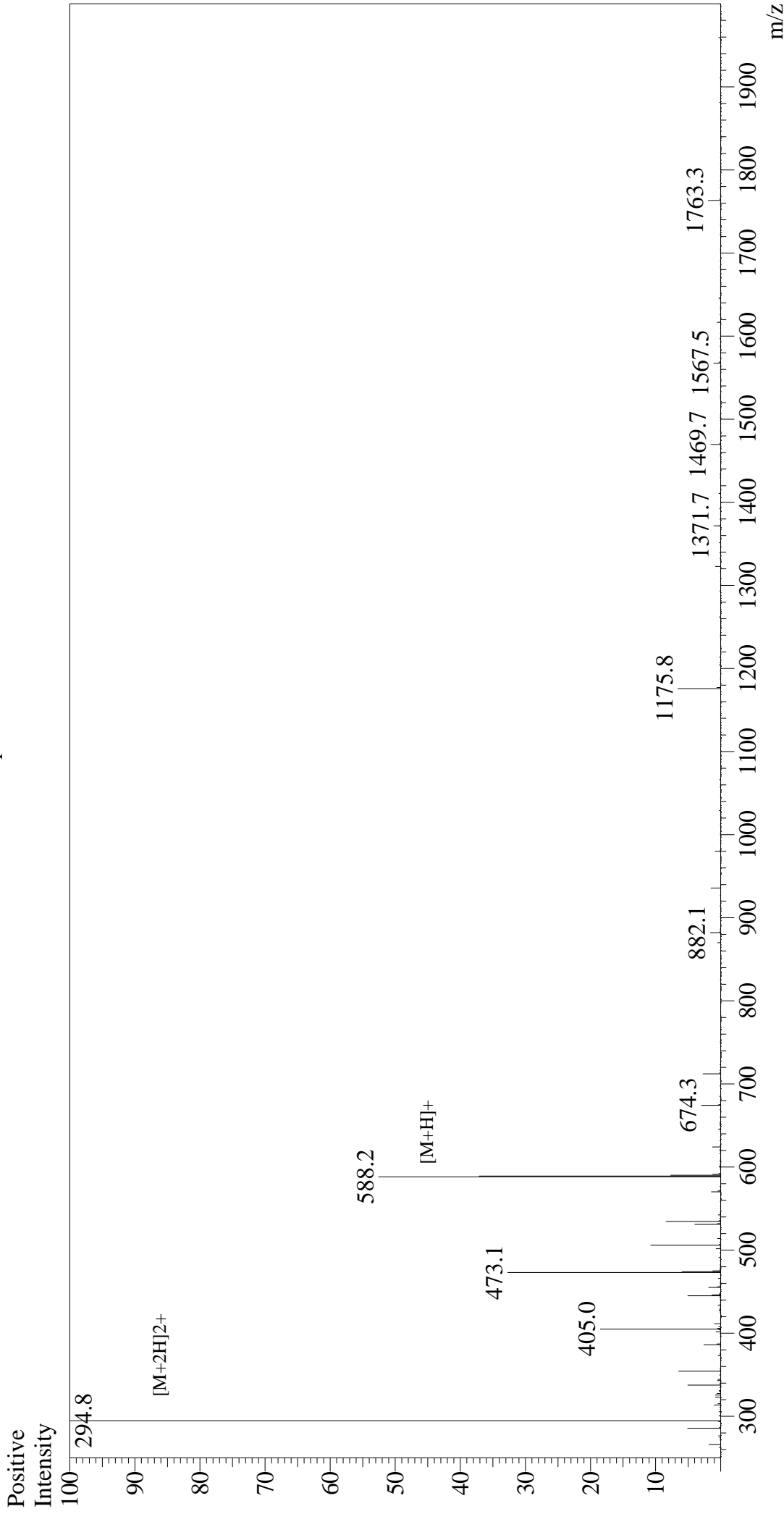


Mass Spectrum



Sample Information
Month-Day Processed : 09/18/20
Time Processed : 23:53:49
Injection Volume : 0.3
Sample Name : GRGDSP
Cat. No. : RP20255
Lot. No. : E8882620I
Theoretical MW : 587.59
Observed MW : 587.6

Interface : ESI
Nebulizing Gas Flow : 1.5L/min
CDL Temp : 250
Block Temp : 200

Equipment : GK11010007
Interface Bias : +4.5 kV
Drying Gas Flow : 5 L/min
T.Flow : 0.2 ml/min
B.conc : 50% H2O/50% MeOH