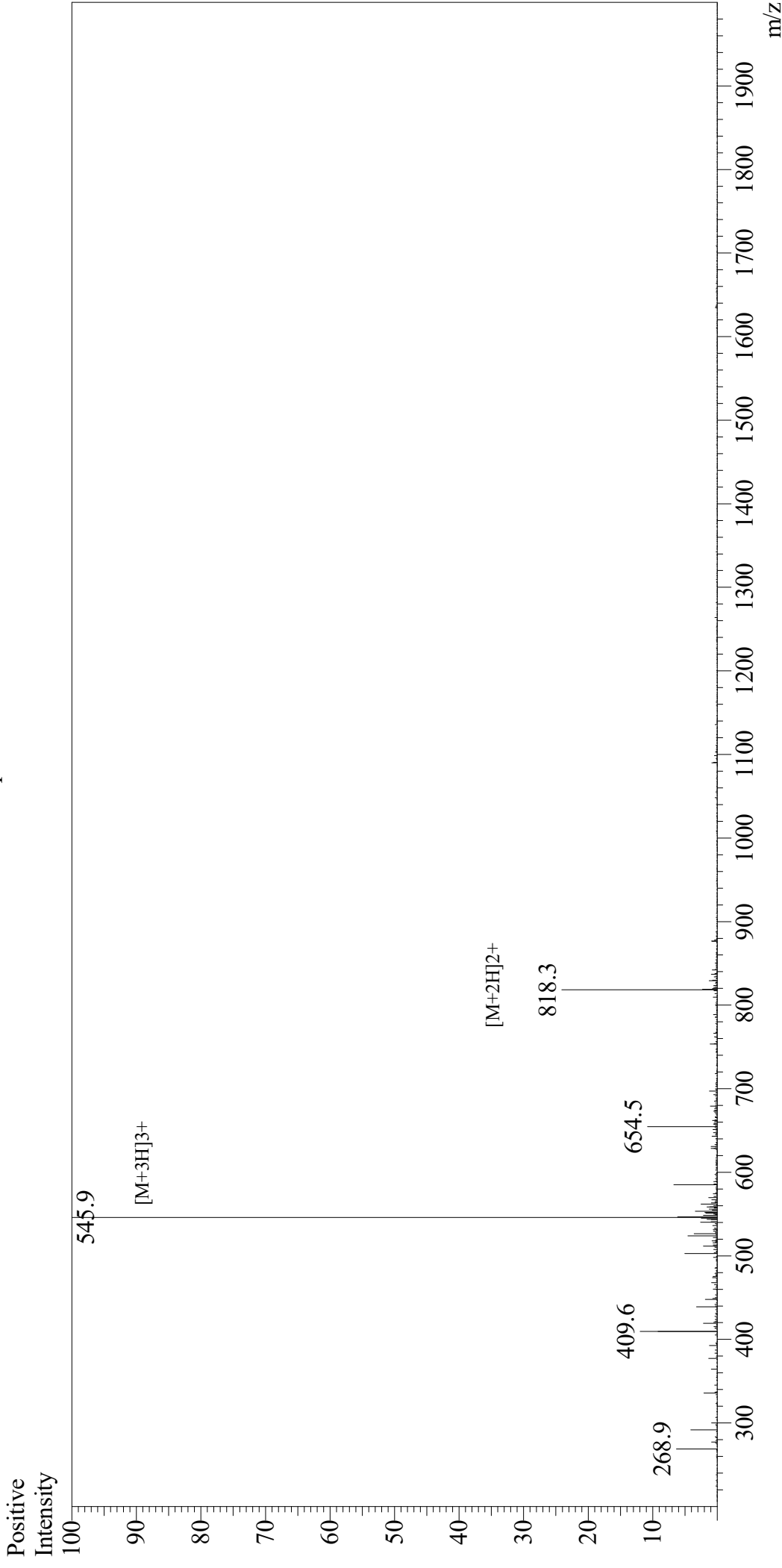


Mass Spectrum



Sample Information

User :	Gary	Equipment	: GK11010007
Month-Day Processed :	02/09/20	Interface Bias	: +4.5kV
Time Processed :	01:49:59 PM	Drying Gas Flow	: 5 L/min
Injection Volume :	0.3	T.Flow	: 0.2ml/min
Sample Name :	EGFRvIII peptide (PEPvIII)	B.conc	: 50%H2O/50%MeOH
Cat No. :	RP20356		
Lot No. :	E0324820B		
Theoretical MW :	1634.82		
Observed MW :	1634.7		