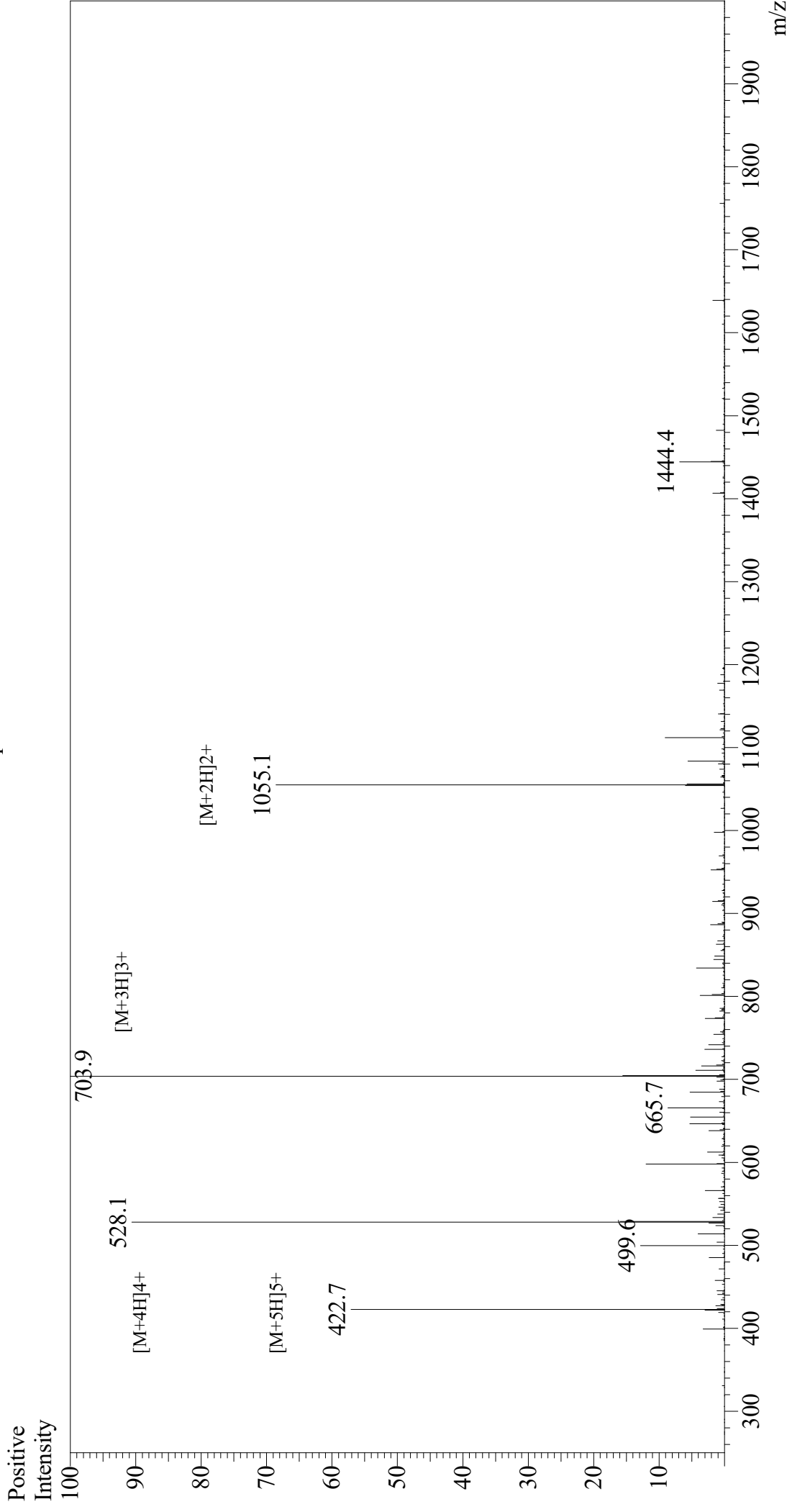


Mass Spectrum



Sample Information

Month-Day Processed : 06/29/21
 Time Processed : 7:11:57
 Injection Volume : 0.4
 Sample Name : Apidaecin IB
 Cat No. : RP20409
 Lot No. : E8363321F
 Theoretical MW : 2108.40
 Observed MW : 2108.7

Interface

Interface : ESI
 Nebulizing Gas Flow : 1.5L/min
 CDL Temp : 250
 Block Temp : 200

Equipment

Interface Bias
 Drying Gas Flow
 T.Flow
 B.conc

: GK11010007

: +3.5 kV

: 5 L/min

: 0.2 ml/min

: 50%H₂O/50%MeOH