

Sample Name : N-Boc-Phe-Leu-Phe-Leu-Phe  
 Cat. No. : RP12950  
 Lot. No. : PE1791709

Pump A : 0.065% trifluoroacetic in 100% water (v/v)  
 Pump B : 0.05% trifluoroacetic in 100% acetonitrile (v/v)  
 Total Flow:1 ml/min  
 Wavelength:220 nm

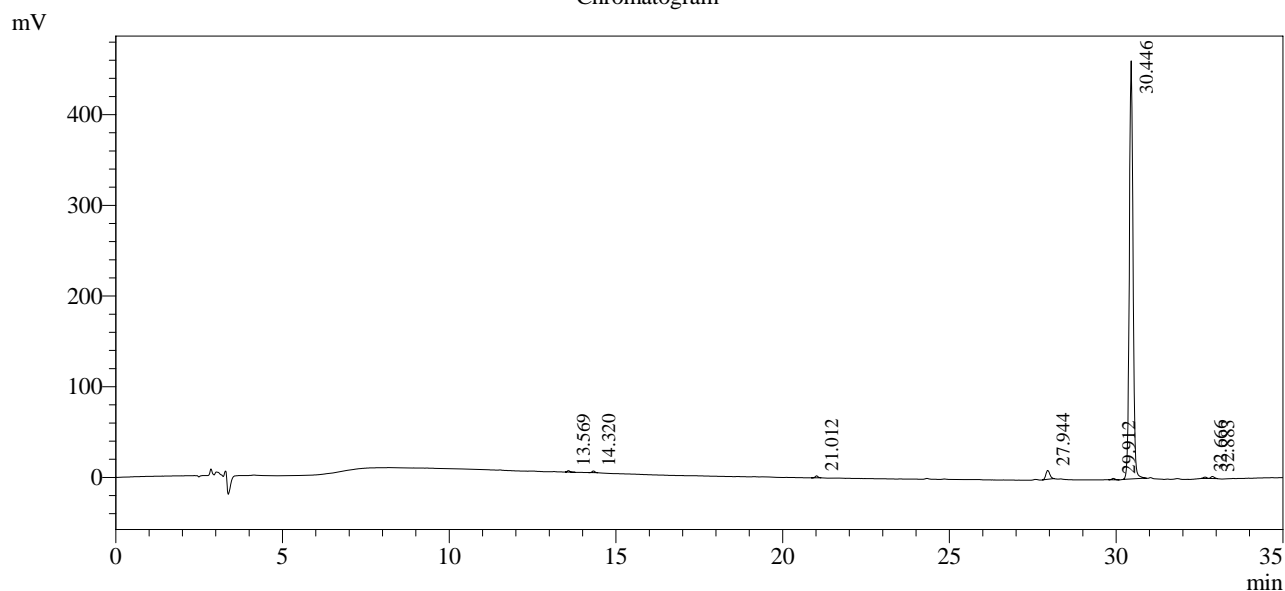
| Time  | Unit       | Command       | Value | Comment |
|-------|------------|---------------|-------|---------|
| 0.01  | Pumps      | Pump A B.Conc | 5     |         |
| 10.00 | Pumps      | Pump A B.Conc | 35    |         |
| 35.00 | Pumps      | Pump A B.Conc | 95    |         |
| 41.00 | Pumps      | Pump A B.Conc | 95    |         |
| 41.01 | Pumps      | Pump A B.Conc | 5     |         |
| 50.00 | Pumps      | Pump A B.Conc | 5     |         |
| 50.01 | Controller | Stop          |       |         |

<<Column Performance>>

<Detector A>

Column : Alltima™ C18 4.6 x 250 mm

Chromatogram



1 Det.A Ch1 / 220nm

Peak Table

Detector A Ch1 220nm

| Peak# | Ret. Time | Area    | Height | Area %  |
|-------|-----------|---------|--------|---------|
| 1     | 13.569    | 9011    | 1659   | 0.242   |
| 2     | 14.320    | 10101   | 1825   | 0.271   |
| 3     | 21.012    | 12145   | 2090   | 0.326   |
| 4     | 27.944    | 80501   | 9785   | 2.162   |
| 5     | 29.912    | 10573   | 1539   | 0.284   |
| 6     | 30.446    | 3574537 | 461019 | 96.003  |
| 7     | 32.666    | 10659   | 1529   | 0.286   |
| 8     | 32.883    | 15832   | 2236   | 0.425   |
| Total |           | 3723359 | 481682 | 100.000 |