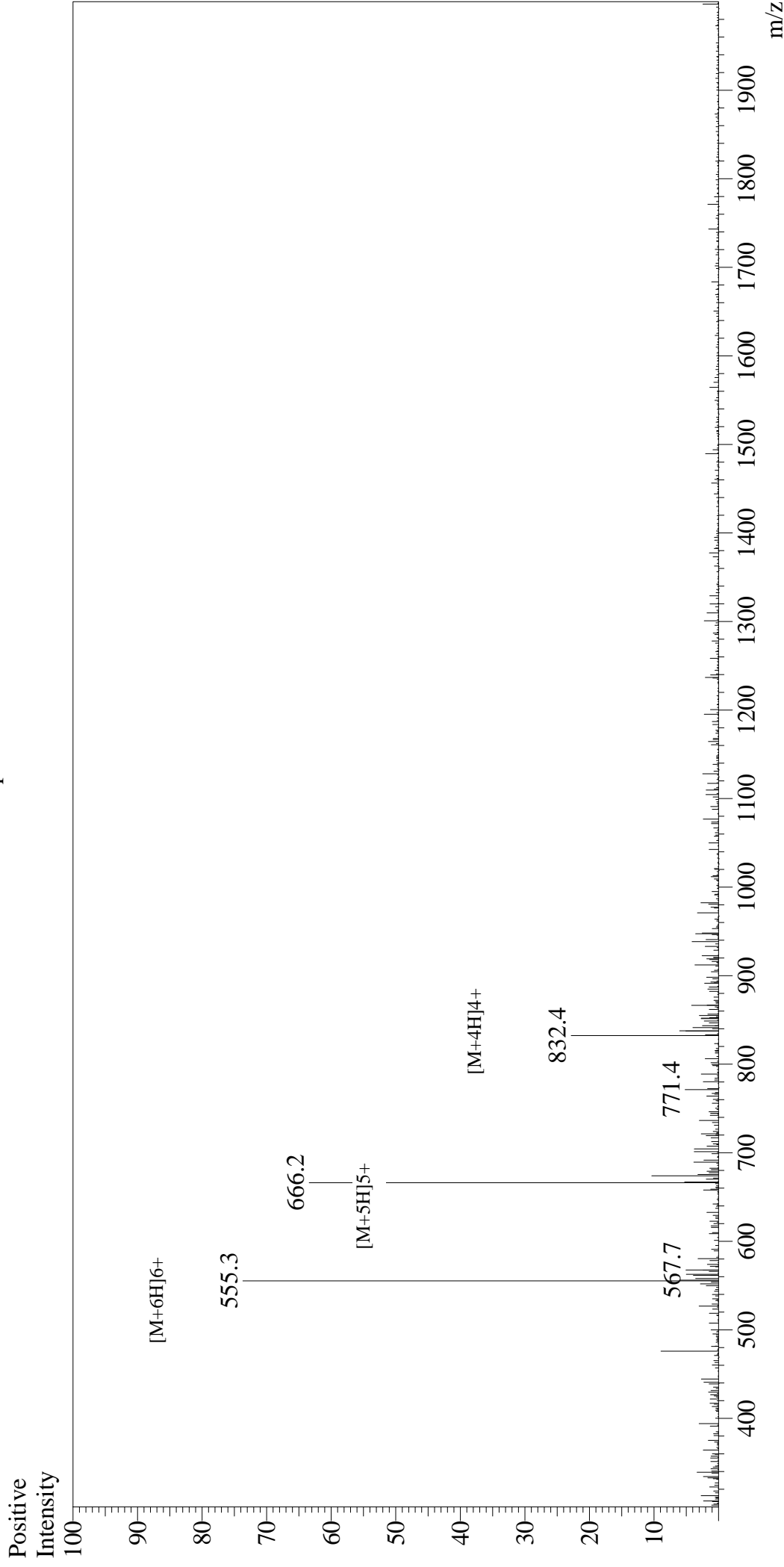


Mass Spectrum



Sample Information

User : Gary
 Month-Day Processed : 01/14/20
 Time Processed : 20:14:11
 Injection Volume : 0.4
 Sample Name : VIP, human, ovine, porcine, rat
 Cat No. : RP10085
 Lot No. : E3656520A
 Theoretical MW : 3325.80
 Observed MW : 3325.8

Interface : ESI
 Nebulizing Gas Flow : 1.5L/min
 CDL Temp : 250
 Block Temp : 200

Equipment : GK11010007
 Interface Bias : +4.5kV
 Drying Gas Flow : 5 L/min
 T.Flow : 0.2ml/min
 B.conc : 50%H2O/50%MeOH