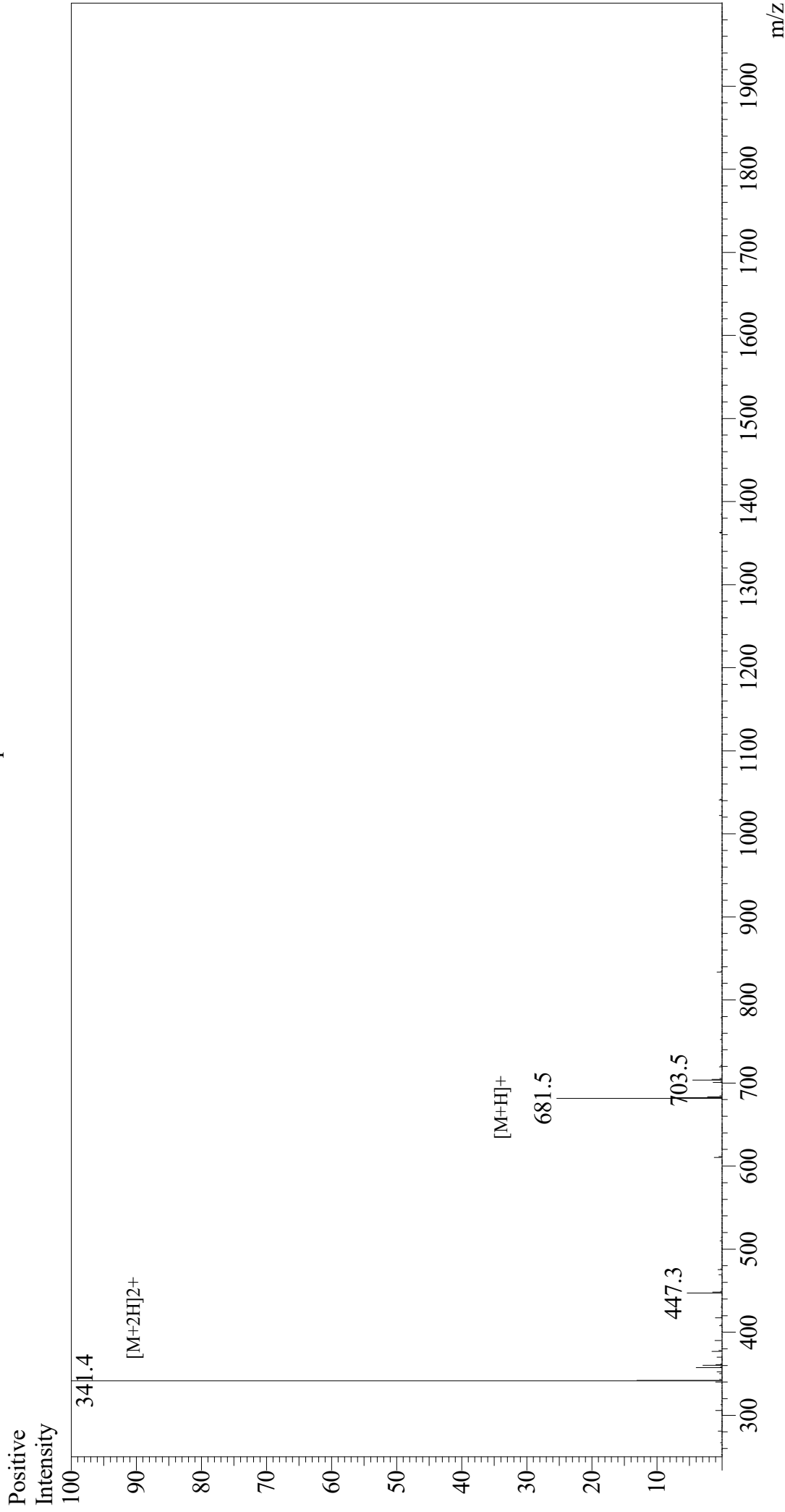


# Mass Spectrum



Sample Information  
Month-Day Processed : 06/17/21  
Time Processed : 9:30:14  
Injection Volume : 0.2  
Sample Name : PAR-4 Agonist Peptide, amide  
Cat. No. : RP11529  
Lot. No. : E1324921F  
Theoretical MW : 680.80  
Observed MW : 680.8

Interface : ESI  
Nebulizing Gas Flow : 1.5L/min  
CDL Temp : 250  
Block Temp : 200

Equipment : GK11010007  
Interface Bias : +4.5 kV  
Drying Gas Flow : 5 L/min  
T.Flow : 0.2 ml/min  
B.conc : 50% H2O/50% MeOH