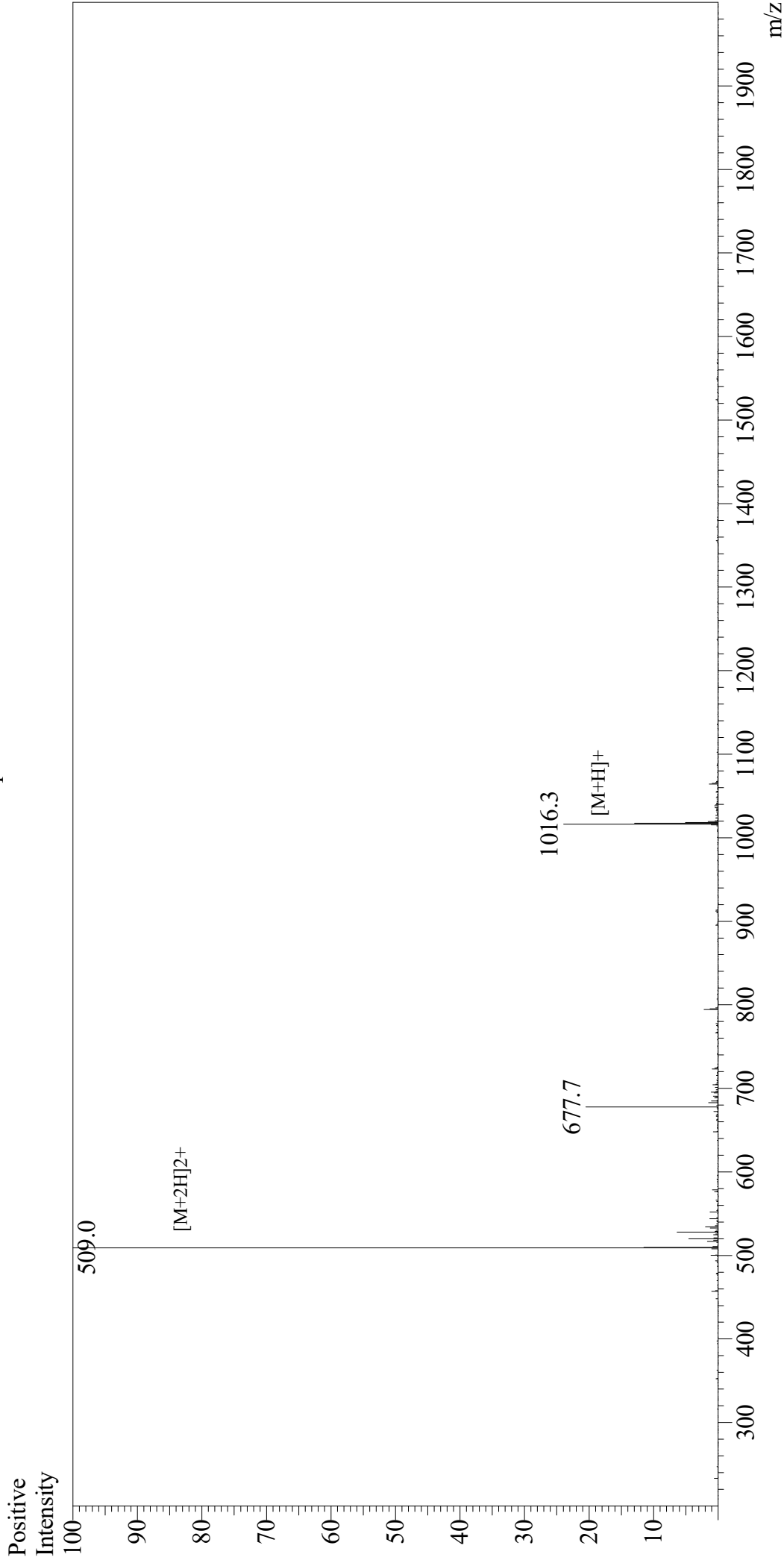


Mass Spectrum



Sample Information

User : Gary
Month-Day Processed : 03/01/19
Time Processed : 02:36:14 PM
Injection Volume : 0.2
Sample Name : GP (33-41)
Cat No. : RP20091
Lot No. : PE8781902
Theoretical MW : 1016.18
Observed MW : 1016.0

Interface : ESI
Nebulizing Gas Flow : 1.5L/min
CDL Temp : 250
Block Temp : 200

Equipment : GK11010007
Interface Bias : +4.5kV
Drying Gas Flow : 5 L/min
T.Flow : 0.2ml/min
B.conc : 50%H2O/50%MeOH