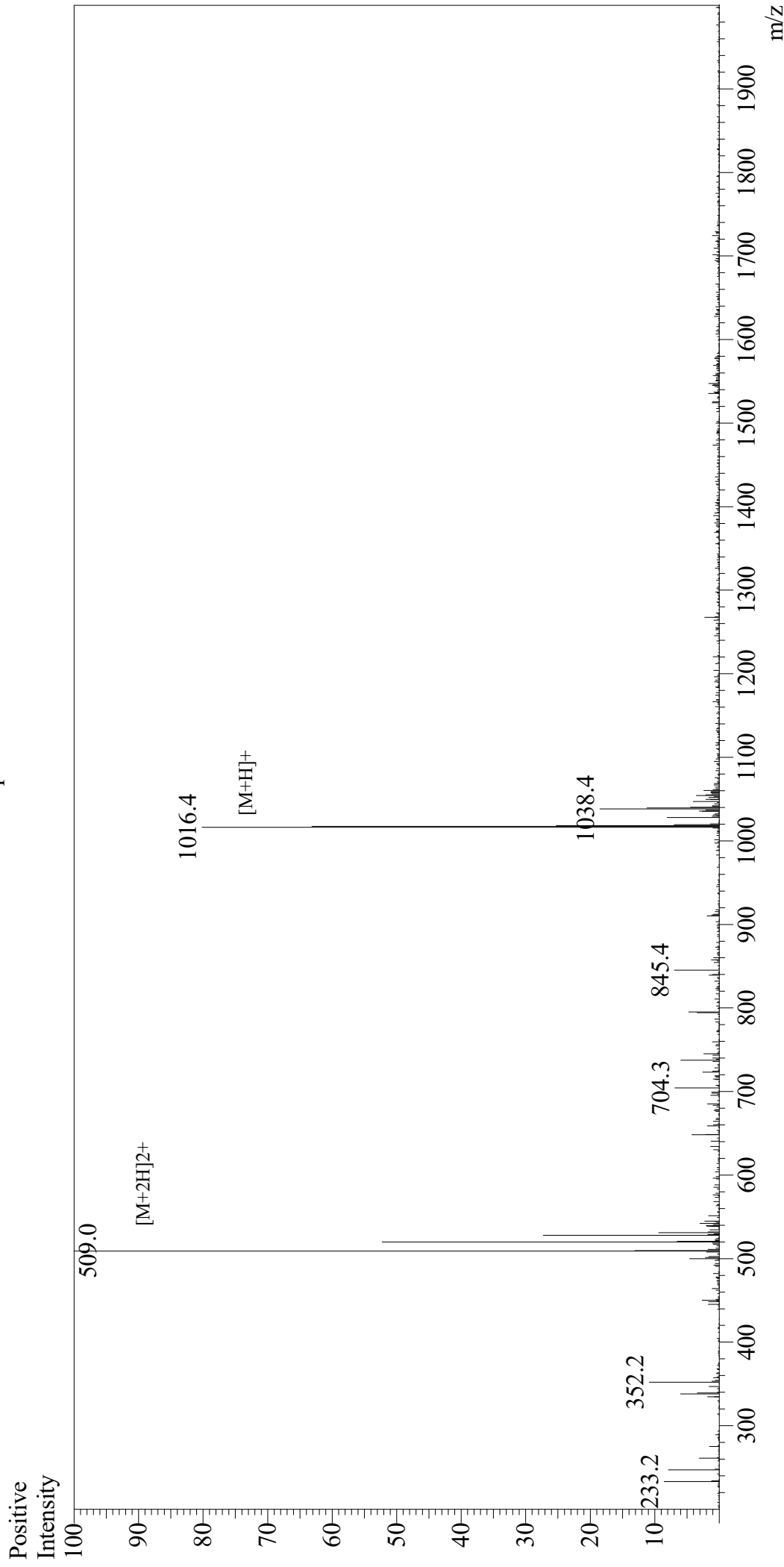


# Mass Spectrum



Sample Information  
Month-Day Processed : 10/13/20  
Time Processed : 7:27:55 AM  
Injection Volume : 0.3  
Sample Name : GP (33-41)  
Cat No. : RP20091  
Lot No. : E5078220J  
Theoretical MW : 1016.18  
Observed MW : 1016.0

Interface : ESI  
Nebulizing Gas Flow : 1.5L/min  
CDL Temp : 250  
Block Temp : 200

Equipment : GK11010007  
Interface Bias : +4.5kV  
Drying Gas Flow : 5 L/min  
T.Flow : 0.2ml/min  
B.conc : 50%H<sub>2</sub>O/50%MeOH