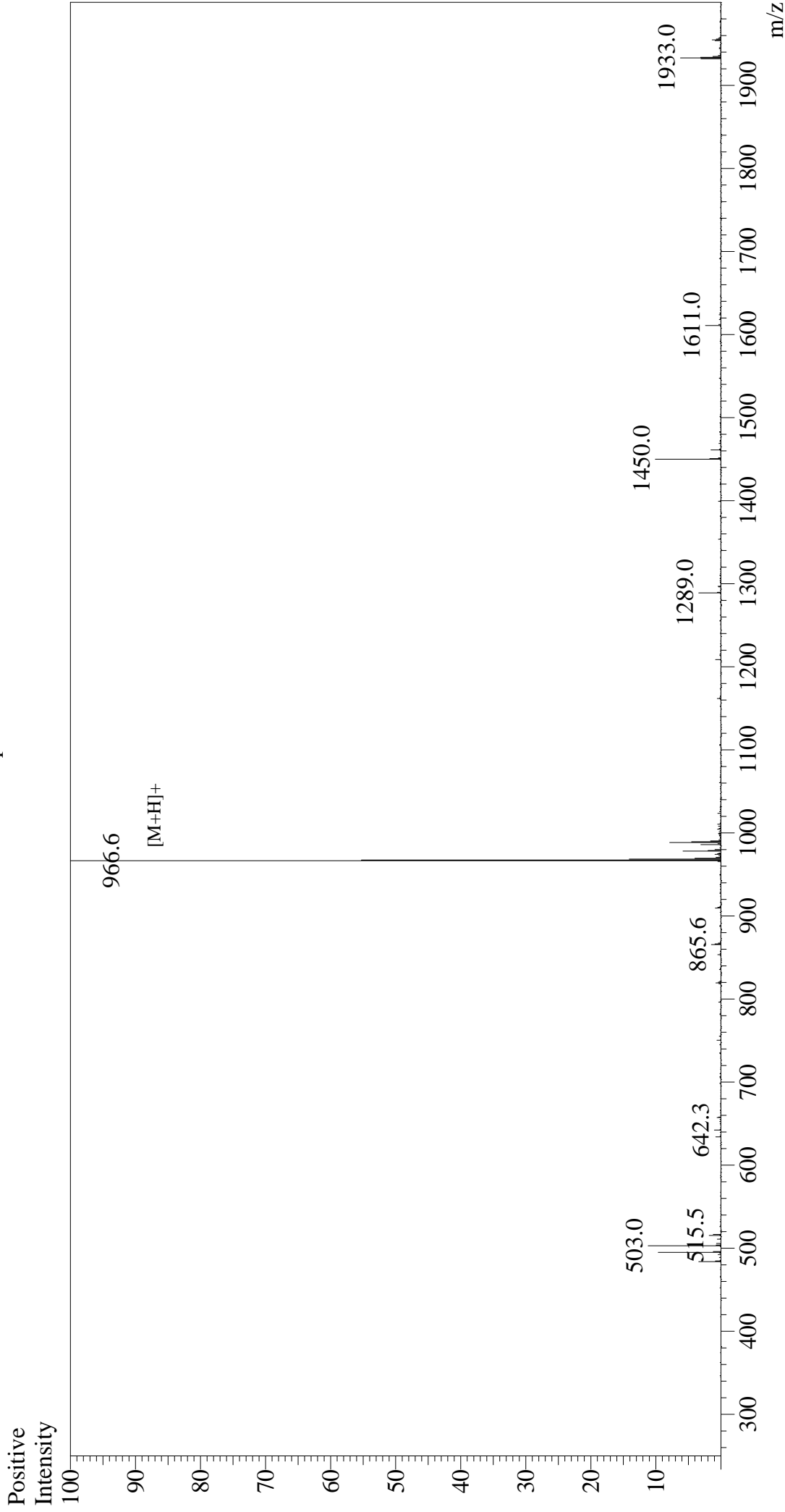


# Mass Spectrum



Sample Information  
Acquired by : Gary  
Month-Day Processed : 11/01/18  
Time Processed : 20:09:10  
Injection Volume : 0.2  
Sample Name : Flu-M1 (58-66)  
Cat. No. : RP19978  
Lot. No. : PE2561811  
Theoretical MW : 966.20  
Observed MW : 965.6

Interface : ESI  
Nebulizing Gas Flow : 1.5L/min  
CDL Temp : 250°C  
Block Temp : 200°C

Equipment : GK11010007  
Interface Bias : +4.5 kV  
Drying Gas Flow : 5 L/min  
T.Flow : 0.2 ml/min  
B.conc : 50% H2O/50% MeOH