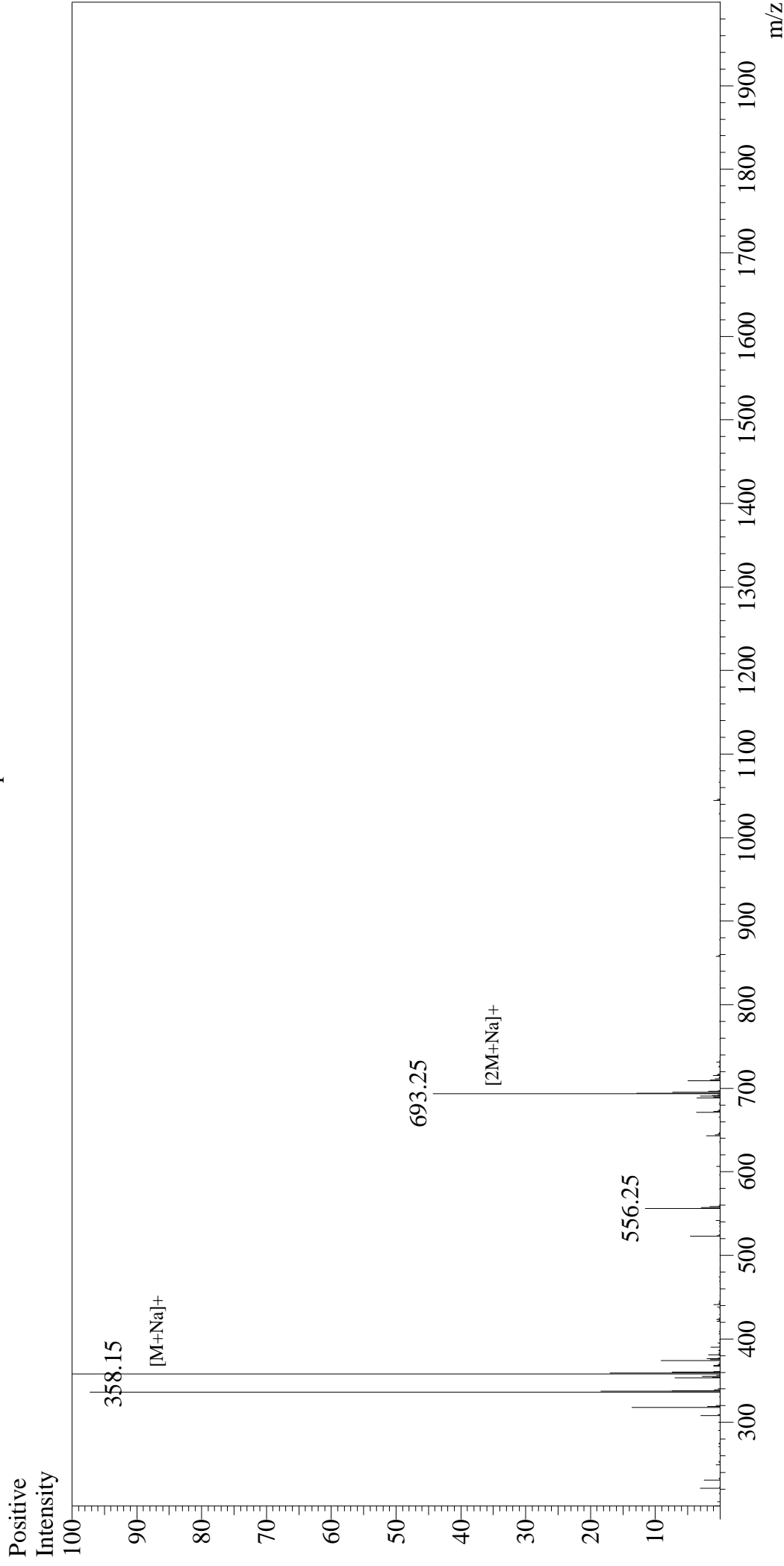


# Mass Spectrum



## Sample Information

User : Gary  
Month-Day Processed : 10/27/16  
Time Processed : 14:37:32  
Injection Volume : 0.2  
Sample Name : N-Formyl-L-Met-Ala-Ser  
Cat No. : RP10587  
Lot No. : PE5541610  
Theoretical MW : 336.40  
Observed MW : 336.15

Interface : ESI  
Nebulizing Gas Flow : 1.5L/min  
CDL Temp : 250°C  
Block Temp : 200°C

Interface Bias : +4.5kV  
Drying Gas Flow : 5 L/min  
T.Flow : 0.2ml/min  
B.conc : 50%H2O/50%MeOH