

Sample Name :Gastric Inhibitory Peptide (GIP), human
 Cat No :RP10795
 Lot No :E6103621G
 Time Processed :16:11:35
 Month-Day-Year Processed :08/15/2021

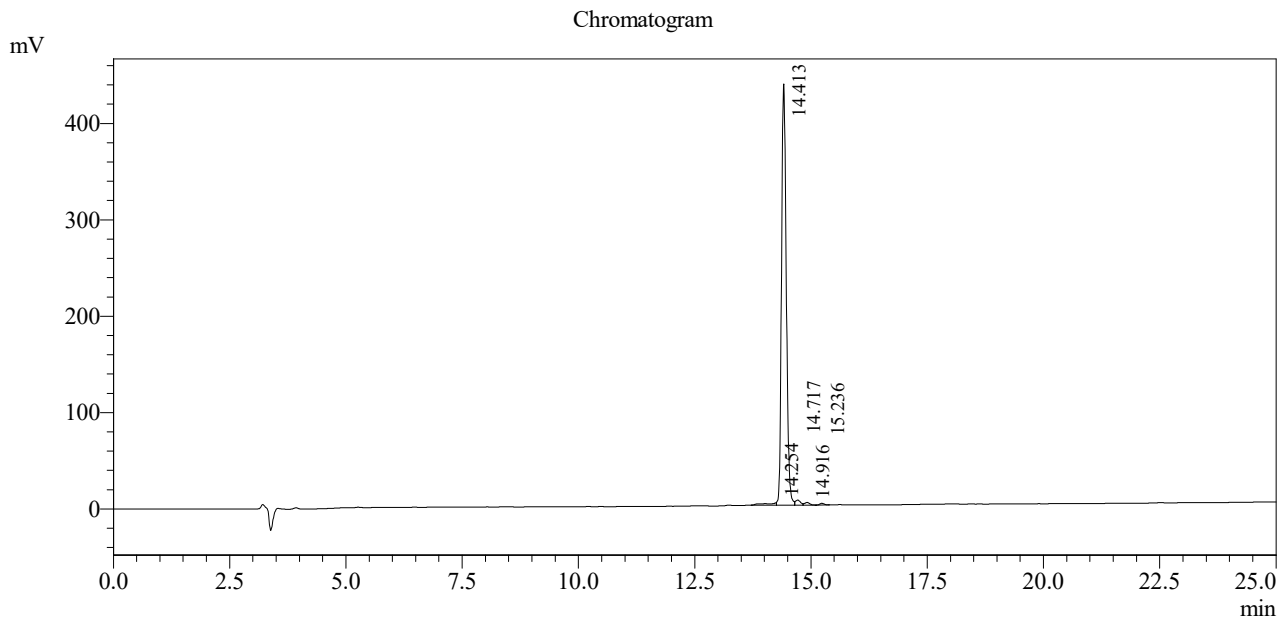
Pump A : 0.065% trifluoroacetic in 100% water (v/v)
 Pump B : 0.05% trifluoroacetic in 100% acetonitrile (v/v)
 Total Flow:1 ml/min
 Wavelength:220 nm

| Time | Module | Command | Value |
|-------|------------|---------|-------|
| 0.01 | Pumps | B.Conc | 5 |
| 25.00 | Pumps | B.Conc | 65 |
| 25.01 | Pumps | B.Conc | 95 |
| 27.00 | Pumps | B.Conc | 95 |
| 27.01 | Pumps | B.Conc | 5 |
| 35.00 | Pumps | B.Conc | 5 |
| 35.01 | Controller | Stop | |

<<Column Performance>>

<Detector A>

Column : Inertsil ODS-3 4.6 x 250 mm



Peak Table

Detector A Channel 1 220nm

| Peak# | Ret. Time | Area | Height | Area % |
|-------|-----------|---------|--------|---------|
| 1 | 14.254 | 40997 | 2541 | 1.271 |
| 2 | 14.413 | 3113634 | 436993 | 96.524 |
| 3 | 14.717 | 39180 | 5181 | 1.215 |
| 4 | 14.916 | 20524 | 2719 | 0.636 |
| 5 | 15.236 | 11436 | 1705 | 0.355 |
| Total | | 3225770 | 449139 | 100.000 |