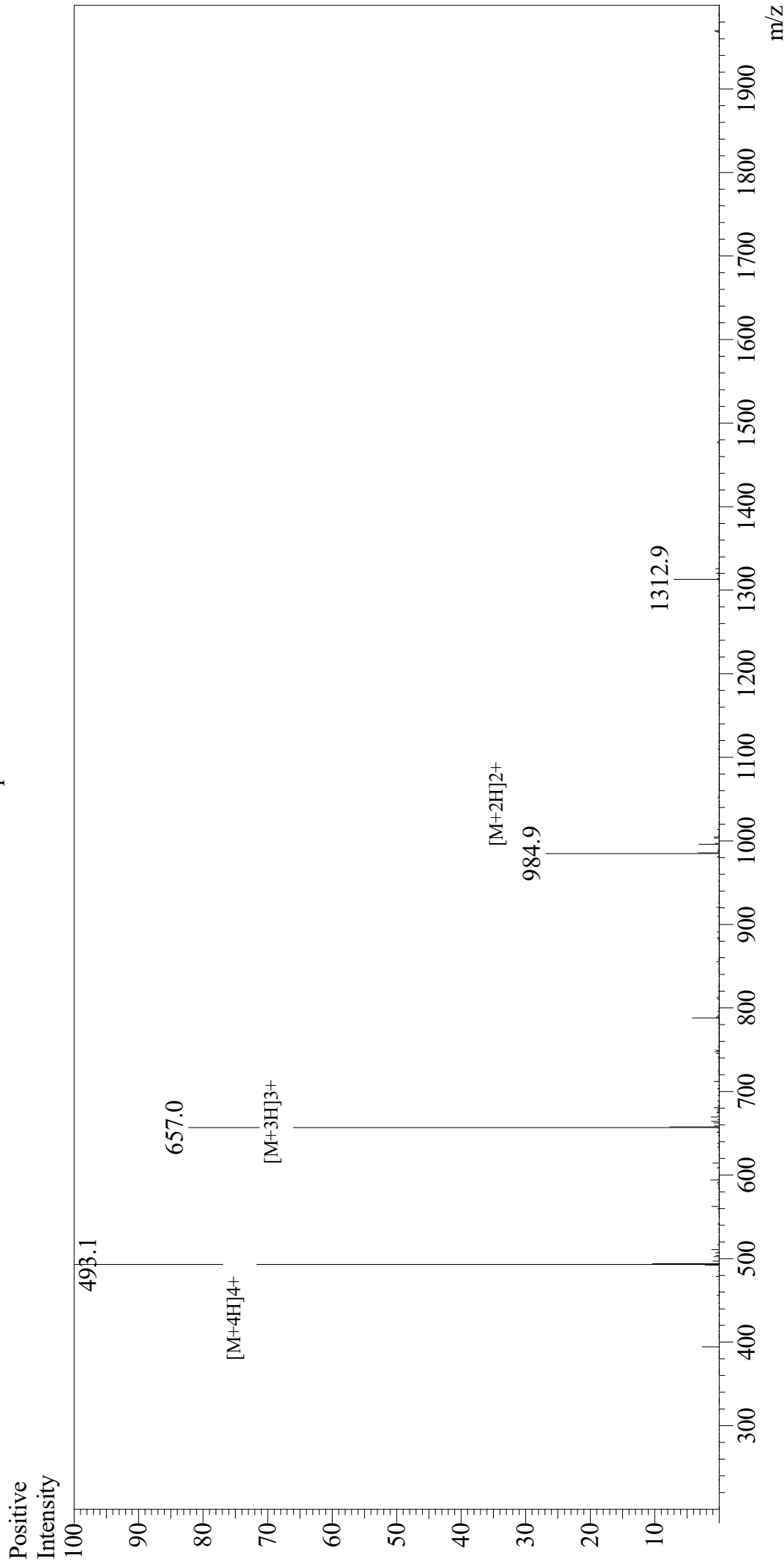


Mass Spectrum



Sample Information

User : Gary
Month-Day Processed : 03/07/19
Time Processed : 06:51:38 PM
Injection Volume : 0.2
Sample Name : PGLa
Cat No. : RP17329
Lot No. : PE8631902
Theoretical MW : 1968.46
Observed MW : 1968.4

Interface

Interface : ESI
Nebulizing Gas Flow : 1.5L/min
CDL Temp : 250
Block Temp : 200

Equipment

Equipment : GK11010007
Interface Bias : +4.5kV
Drying Gas Flow : 5 L/min
T.Flow : 0.2ml/min
B.conc : 50%H2O/50%MeOH