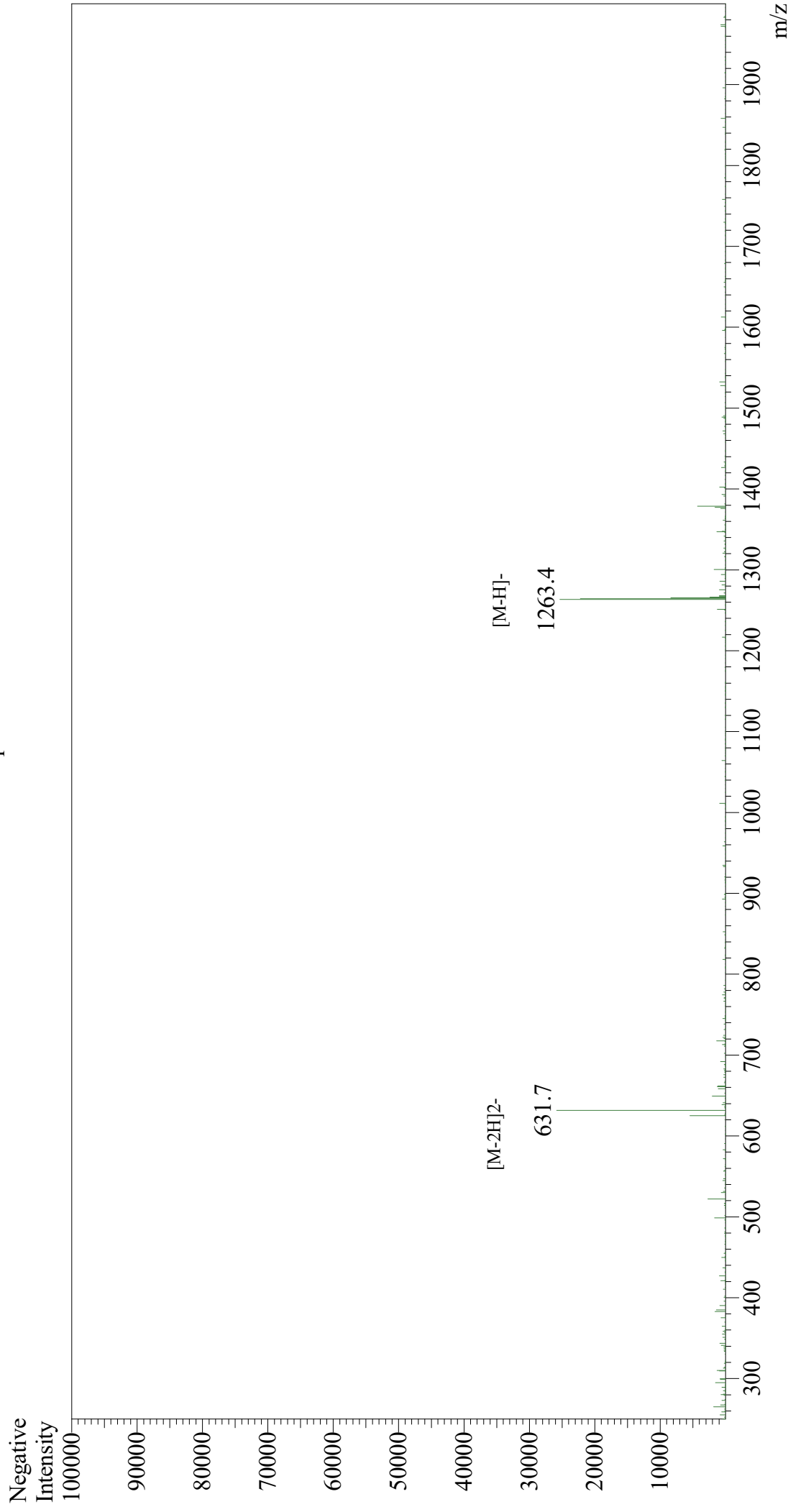


Mass Spectrum



Sample Information
Month-Day Processed : 07/22/21
Time Processed : 10:48:01 AM
Injection Volume : 0.4
Sample Name : Physalaemin
Cat No. : RP10474
Lot No. : E4838921G
Theoretical MW : 1265.44
Observed MW : 1264.4

Interface : ESI
Nebulizing Gas Flow : 1.5L/min
CDL Temp : 250
Block Temp : 200

Equipment : GK11010007
Interface Bias : -3.5 kV
Drying Gas Flow : 5 L/min
T.Flow : 0.2 ml/min
B.conc : 50%H2O/50%MeOH