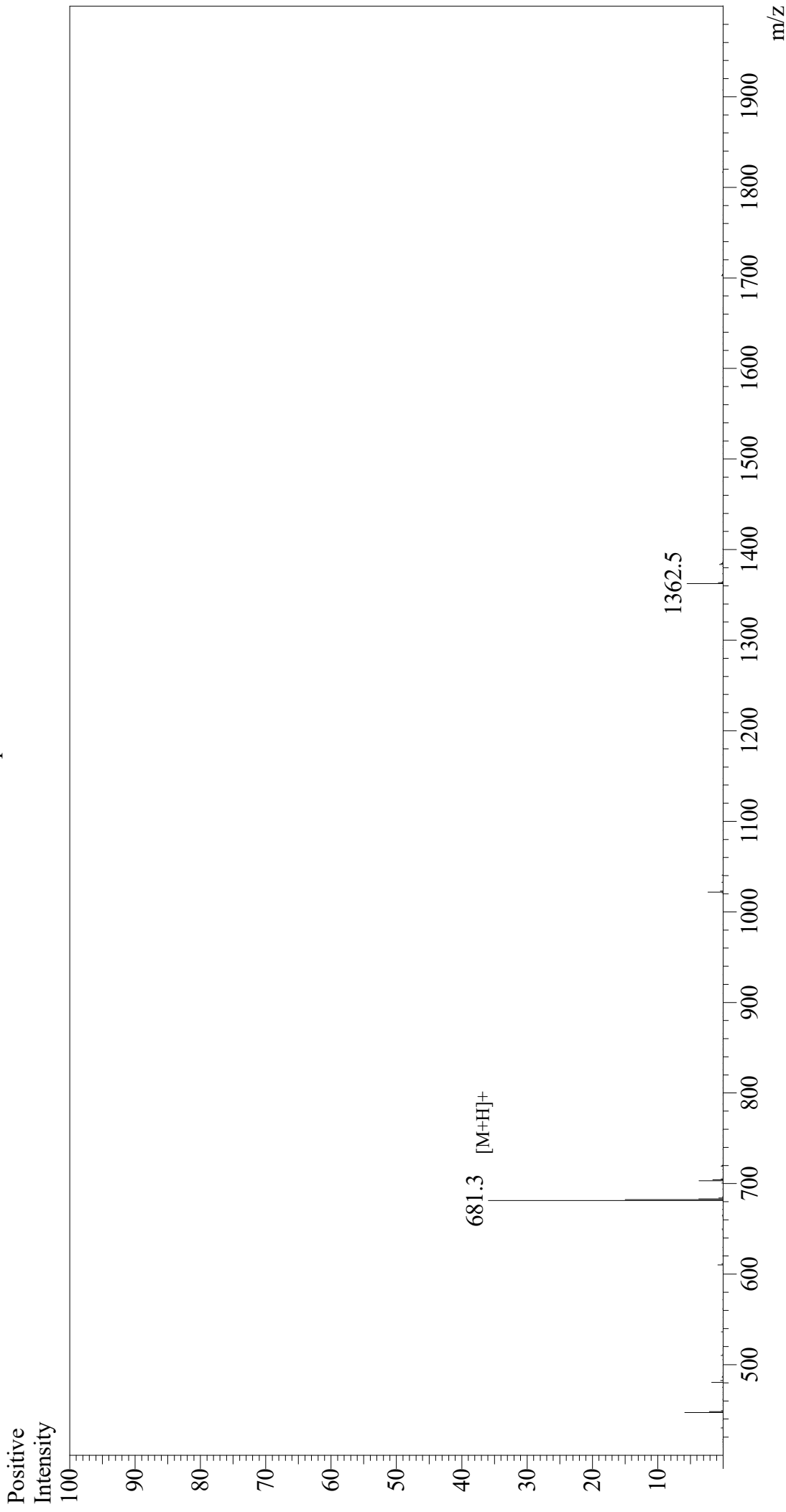


Mass Spectrum



Sample Information
Month-Day Processed : 12/08/20
Time Processed : 7:17:51 PM
Injection Volume : 0.3
Sample Name : PAR-4 Agonist Peptide, amide
Cat No. : RP11529
Lot No. : E8658320L
Theoretical MW : 680.80
Observed MW : 680.3

Interface : ESI
Nebulizing Gas Flow : 1.5L/min
CDL Temp : 250
Block Temp : 200
Equipment : GK11010007
Interface Bias : +3.5 kV
Drying Gas Flow : 5 L/min
T.Flow : 0.2 ml/min
B.conc : 50%H2O/50%MeOH