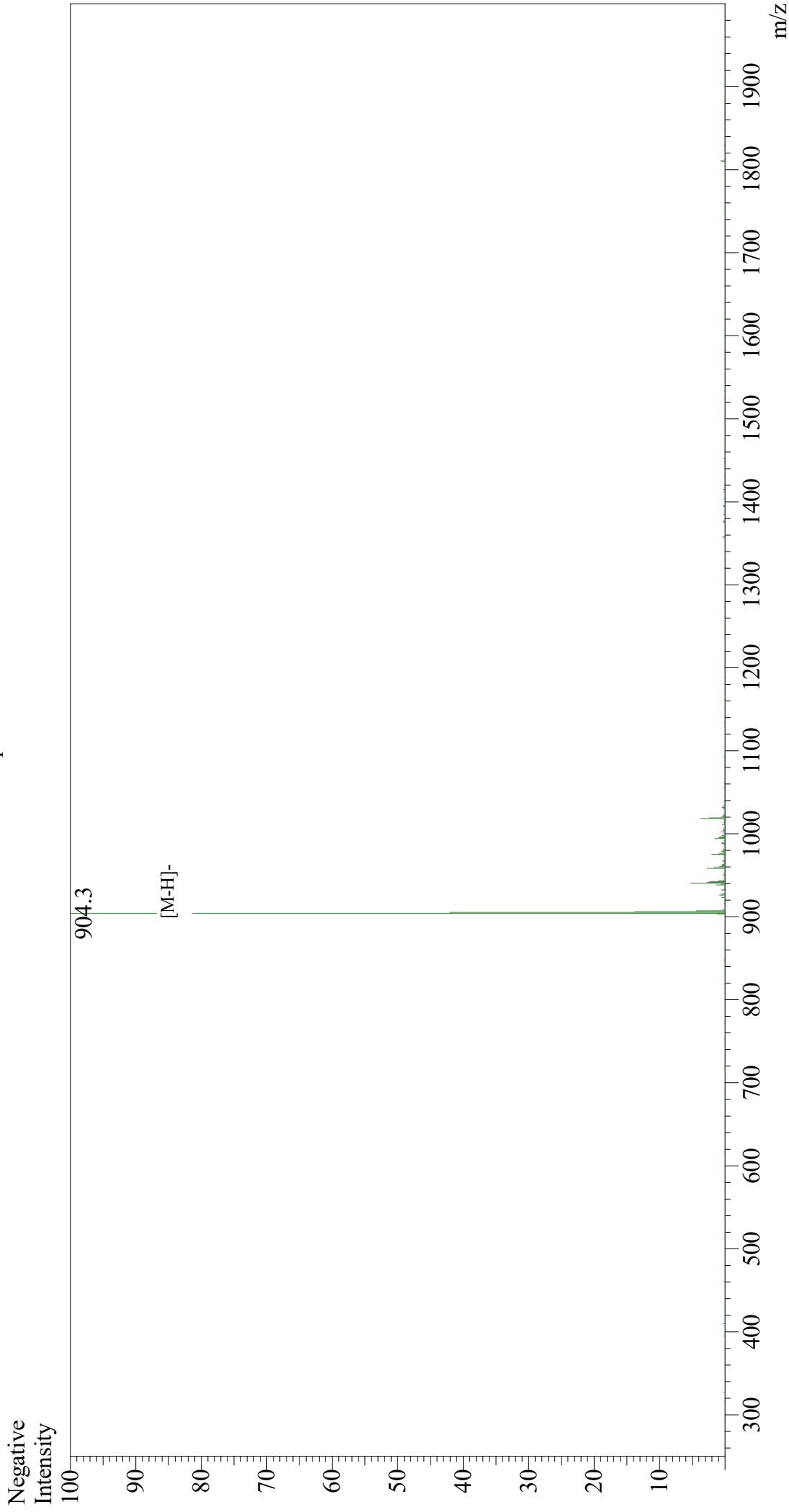


# Mass Spectrum



Sample Information  
Month-Day Processed : 04/03/21  
Time Processed : 22:45:59  
Injection Volume : 0.4  
Sample Name : OVA G4 peptide  
Cat No. : RP20398  
Lot No. : E2027021C  
Theoretical MW : 906.08  
Observed MW : 905.3

Interface : ESI  
Nebulizing Gas Flow : 1.5L/min  
CDL Temp : 250  
Block Temp : 200

Equipment : GK11010007  
Interface Bias : -3.5 kV  
Drying Gas Flow : 5 L/min  
T.Flow : 0.2 ml/min  
B.conc : 50%H2O/50%MeOH