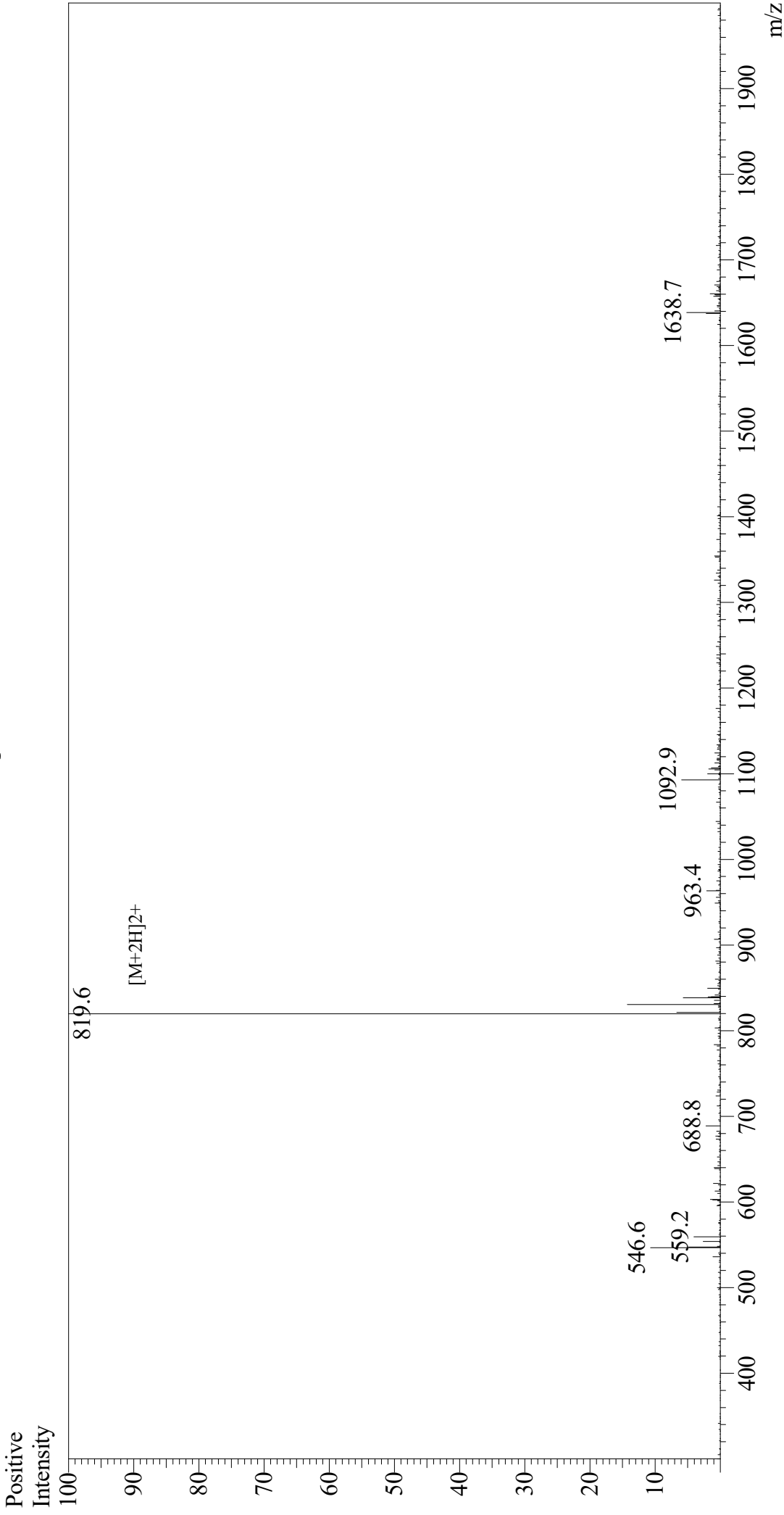


Mass Spectrum



Sample Information

Acquired by: Gary
Month-Day Processed: 05/11/20
Time Processed: 08:19:45 AM
Injection Volume: 0.5
Sample Name: Somatostatin
Cat. No.: RP10226
Lot. No.: E8852520D
Theoretical MW: 1637.88
Observed MW: 1637.2

Interface: ESI
Nebulizing Gas Flow: 1.5L/min
CDL Temp: 250
Block Temp: 200

Equipment: GK11010007
Interface Bias: +4.5 kV
Drying Gas Flow: 5 L/min
T.Flow: 0.2 ml/min
B.conc: 50% H2O/50% MeOH