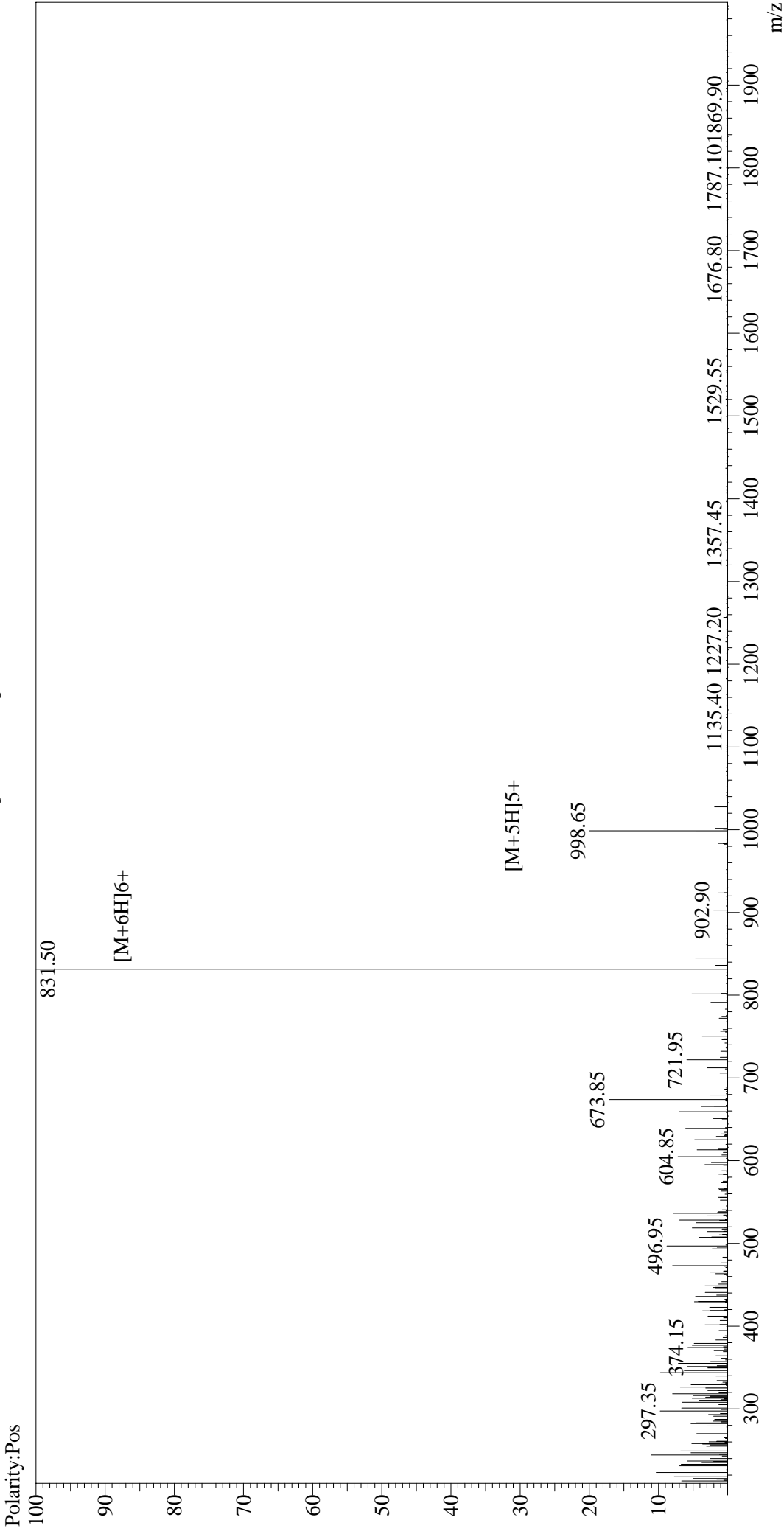


MS Spectrum Graph



Interface :ESI
Nebulizing Gas Flow :1.5L/min
CDL Temp :250°C
Block Temp :200°C

Interface Bias : +4.5 kV
Drying Gas Flow :5 L/min
T.Flow :0.2 ml/min
B.conc :50%H2O/50%MeOH

Sample Information

Acquired by : Admin
Date Acquired : 2017-1-19 12:36:31
Injection Volume : 1
Sample Name : Gastric Inhibitory Peptide (GIP), human
Cat No. :RP10795
Lot No. : PE4931701
Theoretical MW : 4983.60
Observed MW : 4983.00