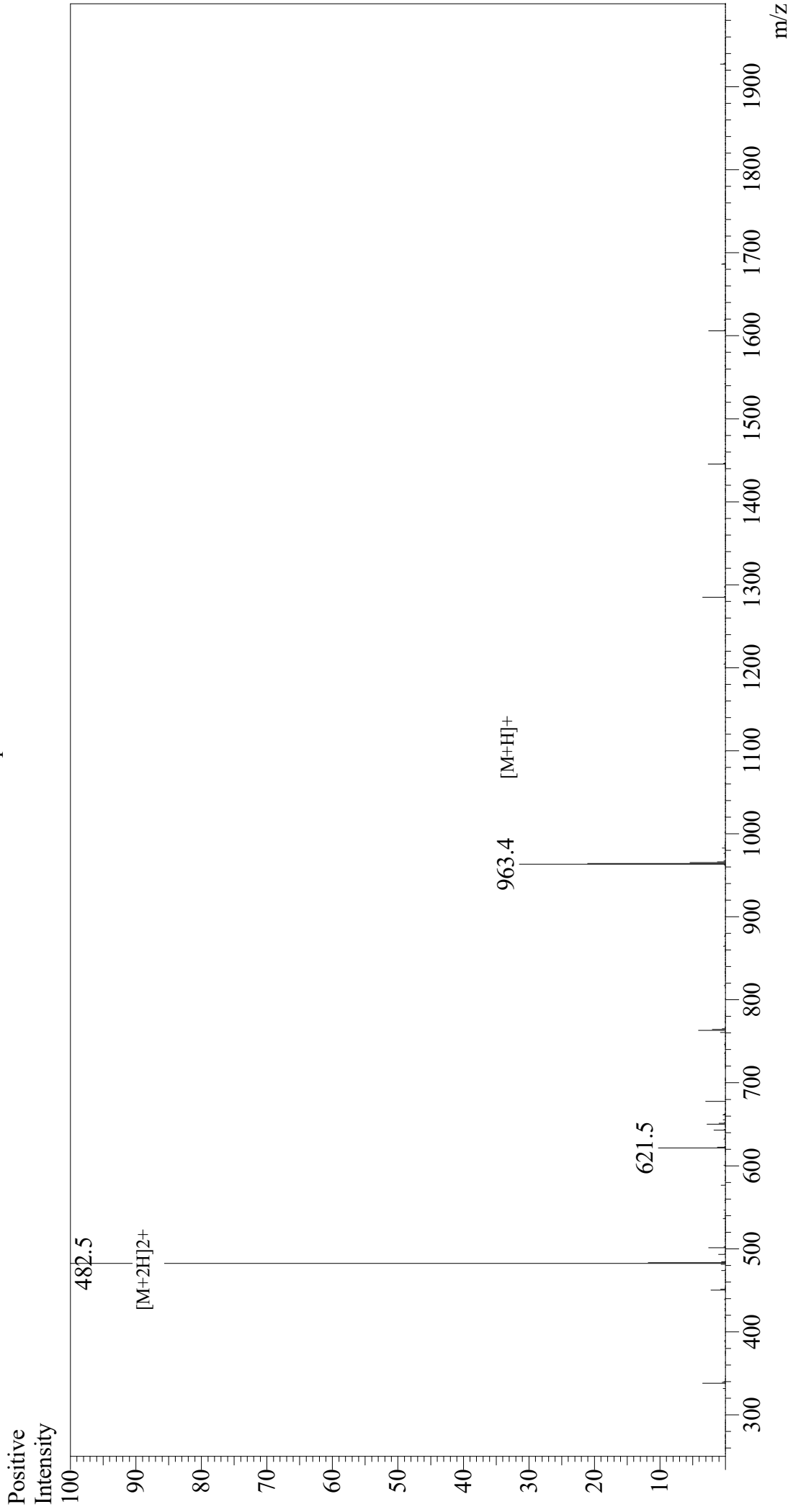


# Mass Spectrum



Sample Information  
Month-Day Processed : 03/13/21  
Time Processed : 6:21:40 AM  
Injection Volume : 0.6  
Sample Name : OVA Peptide (257-264)  
Cat No. : RP10611  
Lot No. : E8093821C  
Theoretical MW : 963.13  
Observed MW : 963.0

Interface : ESI  
Nebulizing Gas Flow : 1.5L/min  
CDL Temp : 250  
Block Temp : 200

Equipment : GK11010007  
Interface Bias : +3.5 kV  
Drying Gas Flow : 5 L/min  
T.Flow : 0.2 ml/min  
B.conc : 50%H<sub>2</sub>O/50%MeOH