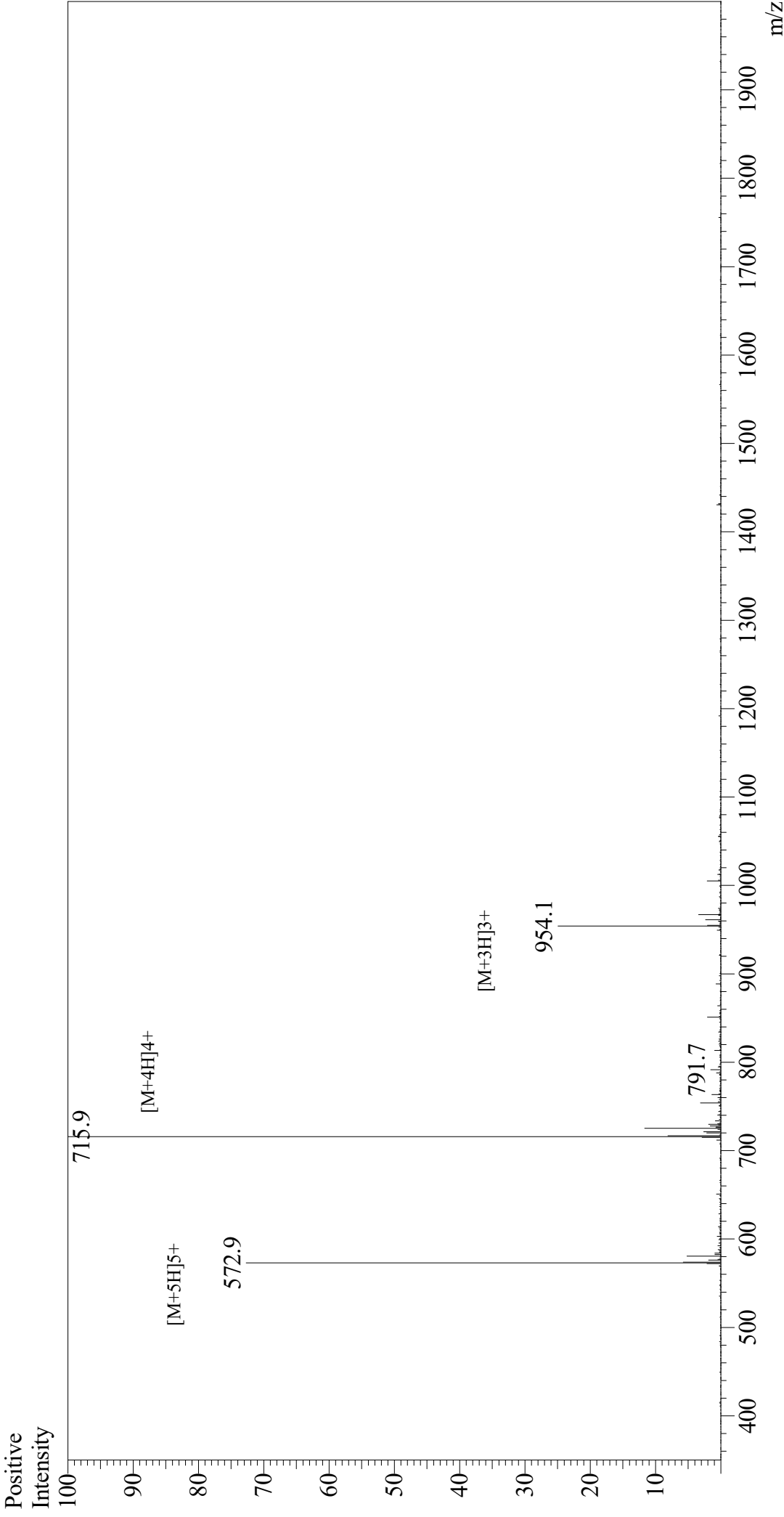


Mass Spectrum



Sample Information
Month-Day Processed : 05/20/21
Time Processed : 9:14:47
Injection Volume : 0.2
Sample Name : Gastrin-Releasing Peptide, human
Cat. No. : RP10791
Lot. No. : E2869221E
Theoretical MW : 2859.30
Observed MW : 2859.6

Interface : ESI
Nebulizing Gas Flow : 1.5L/min
CDL Temp : 250
Block Temp : 200

Equipment : GK11010007
Interface Bias : +4.5 kV
Drying Gas Flow : 5 L/min
T.Flow : 0.2 ml/min
B.conc : 50% H2O/50% MeOH