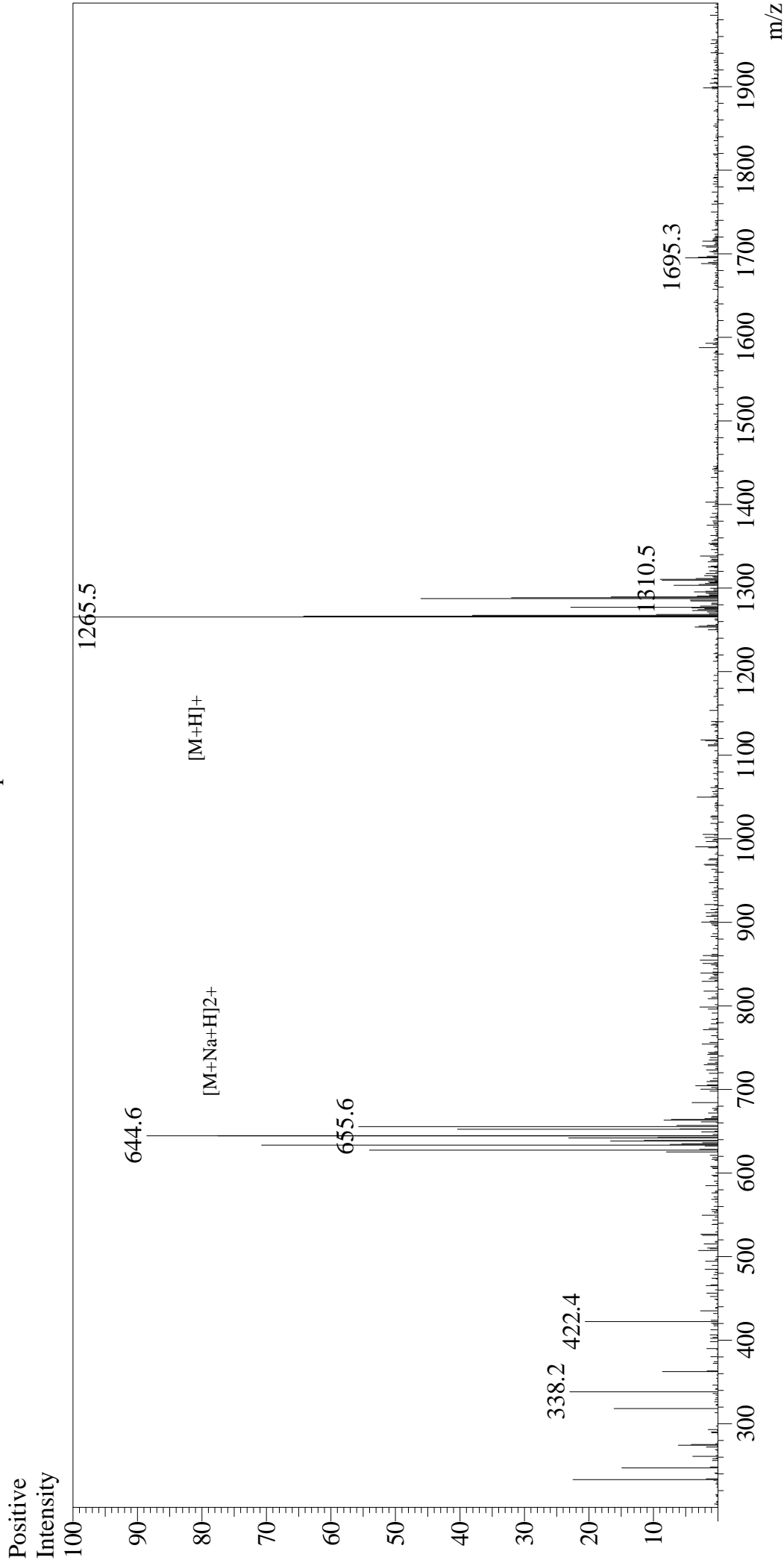


# Mass Spectrum



## Sample Information

Month-Day Processed : 10/15/20  
Time Processed : 12:34:06  
Injection Volume : 0.3  
Sample Name : Physalaemin  
Cat No. : RP10474  
Lot No. : E6525720J;  
Theoretical MW : 1265.44  
Observed MW : 1264.5

Interface : ESI  
Nebulizing Gas Flow : 1.5L/min  
CDL Temp : 250  
Block Temp : 200

Equipment : GK11010007  
Interface Bias : +4.5kV  
Drying Gas Flow : 5 L/min  
T.Flow : 0.2ml/min  
B.conc : 50%H2O/50%MeOH