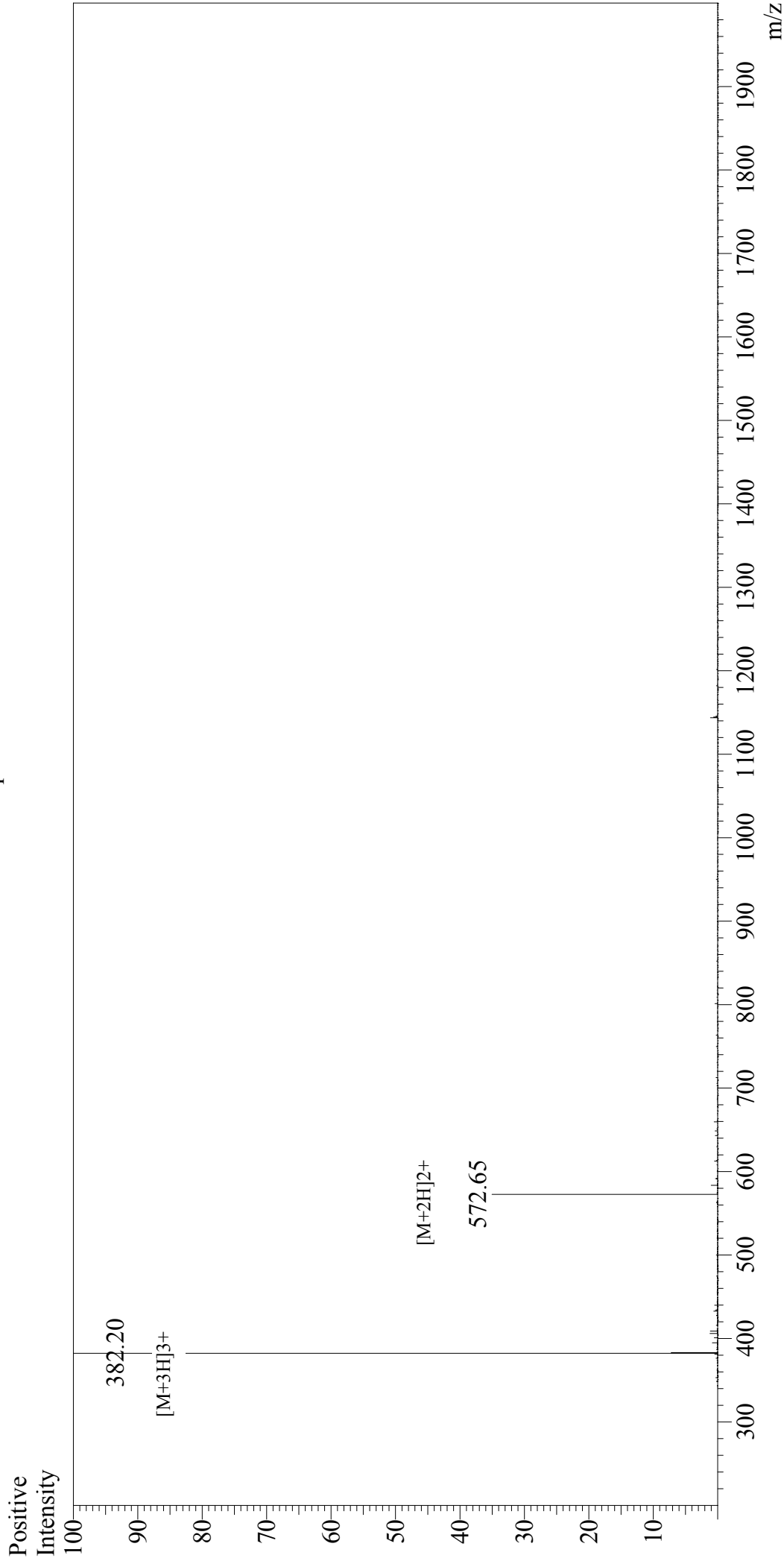


Mass Spectrum



Sample Information

User :	Gary	Interface :	ESI	Interface Bias :	+4.5kV
Month-Day Processed :	06/26/18	Nebulizing Gas Flow :	1.5L/min	Drying Gas Flow :	5 L/min
Time Processed :	13:29:09	CDL Temp :	250°C	T.Flow :	0.2ml/min
Injection Volume :	0.2	Block Temp :	200°C	B.conc :	50%H2O/50%MeOH
Sample Name :	CEF27, Epstein - Barr Virus BRLF - 1 lytic (148 - 156)				
Cat No. :	RP20397				
Lot No. :	PE2651806				
Theoretical MW :	1143.30				
Observed MW :	1143.60				