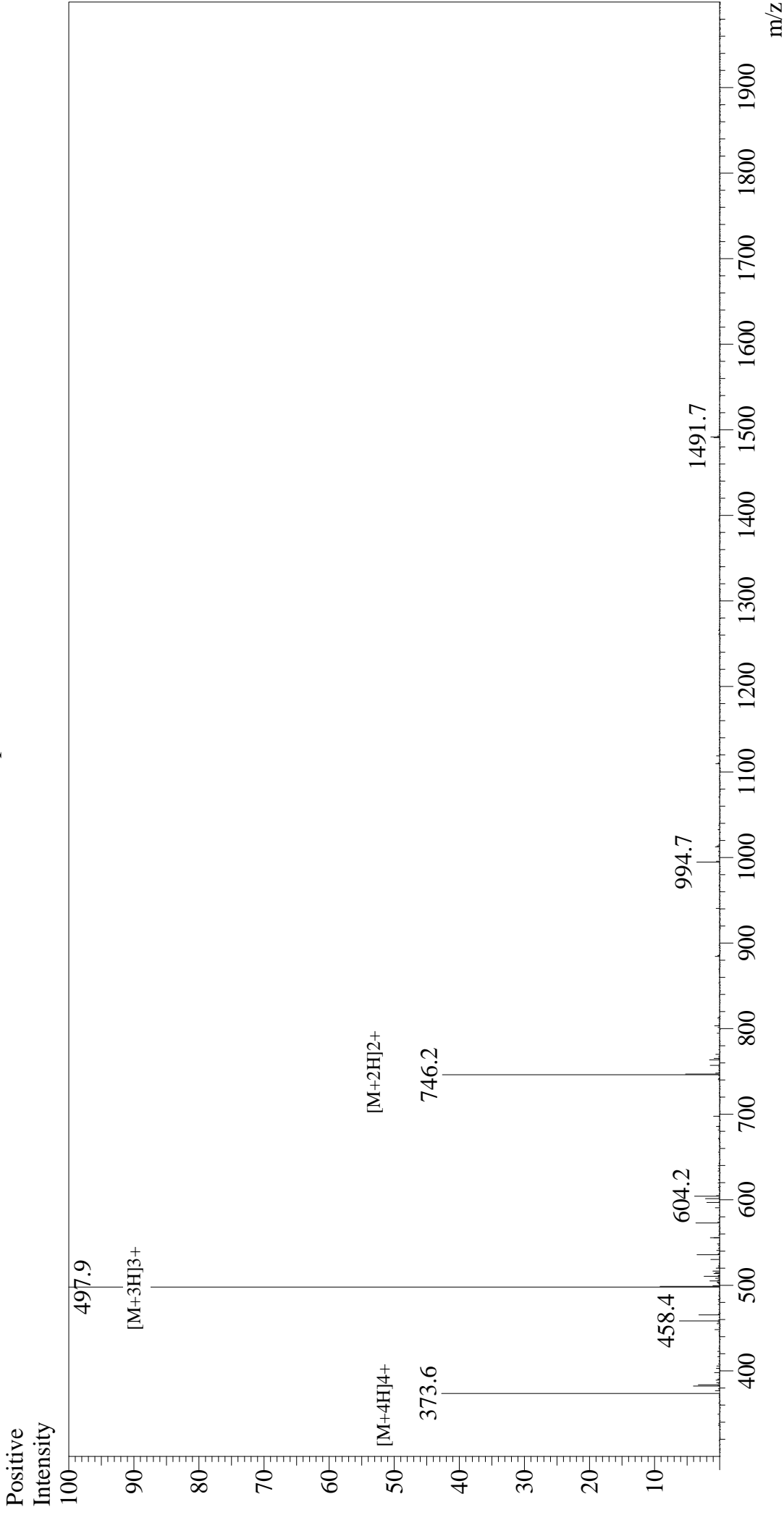


Mass Spectrum



Sample Information

Acquired by : Gary
Month-Day Processed : 11/21/19
Time Processed : 21:17:03
Injection Volume : 0.3
Sample Name : SV40 T-Ag-derived NLS peptide
Cat. No. : RP20513
Lot. No. : E4057019K
Theoretical MW : 1490.80
Observed MW : 1490.7

Interface

Interface : ESI
Nebulizing Gas Flow : 1.5L/min
CDL Temp : 250
Block Temp : 200

Equipment

Equipment : GK11010007
Interface Bias : +4.5 kV
Drying Gas Flow : 5 L/min
T.Flow : 0.2 ml/min
B.conc : 50% H2O/50% MeOH