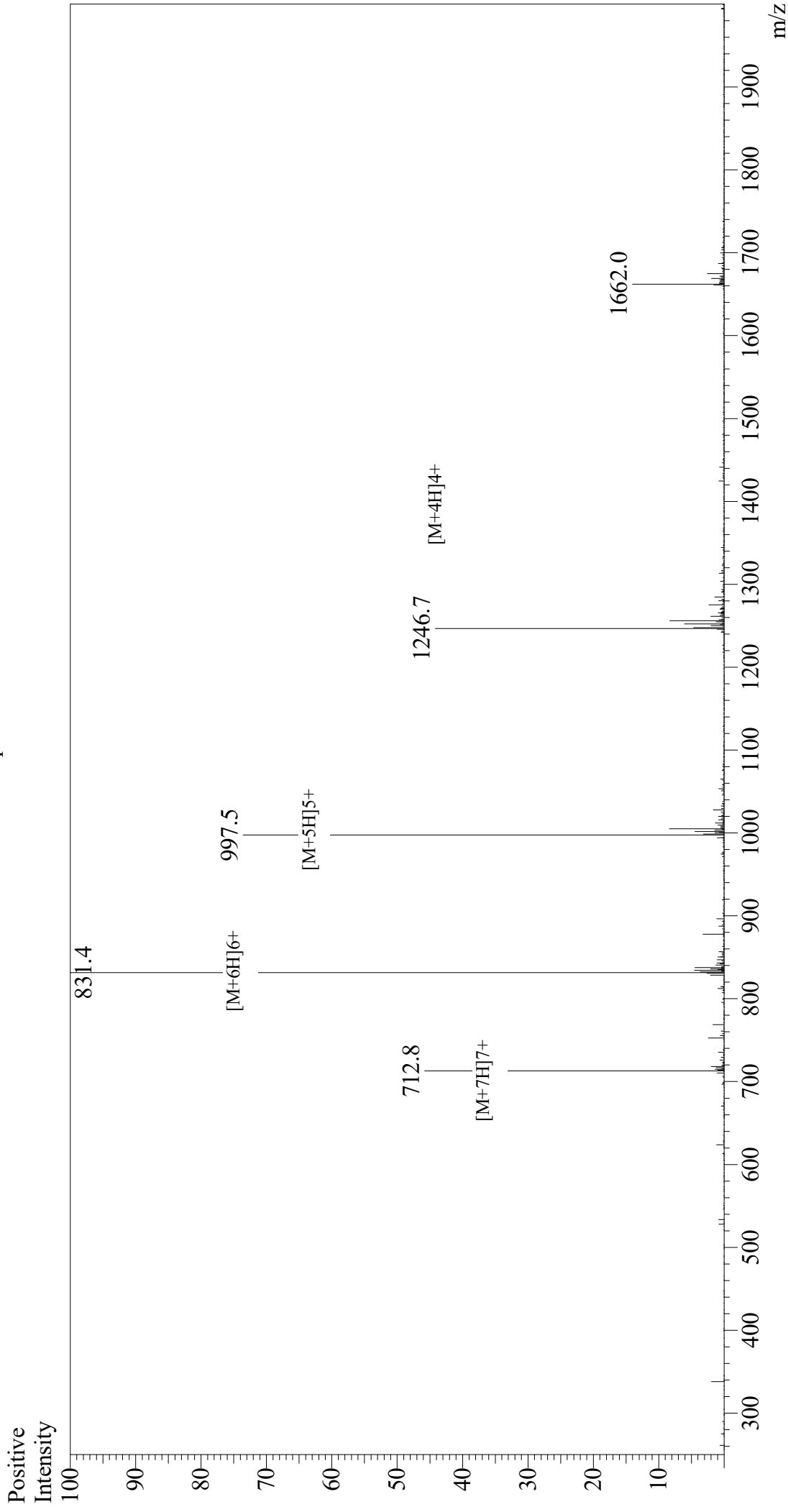


Mass Spectrum



Sample Information
Month-Day Processed : 02/14/21
Time Processed : 5:31:23 PM
Injection Volume : 0.4
Sample Name : Gastric Inhibitory Peptide (GIP), human
Cat No. : RP10795
Lot No. : E6507021B
Theoretical MW : 4983.60
Observed MW : 4982.4

Interface : ESI
Nebulizing Gas Flow : 1.5L/min
CDL Temp : 250
Block Temp : 200

Equipment : GK11010007
Interface Bias : +3.5 kV
Drying Gas Flow : 5 L/min
T.Flow : 0.2 ml/min
B.conc : 50%H2O/50%MeOH