

Sample Name : Calcitonin Gene Related Peptide (CGRP) (8-37), rat
 Cat. No. : RP11090
 Lot. No. : PE8521806

Pump A : 0.065% trifluoroacetic in 100% water (v/v)
 Pump B : 0.05% trifluoroacetic in 100% acetonitrile (v/v)
 Total Flow:1 ml/min
 Wavelength:220 nm

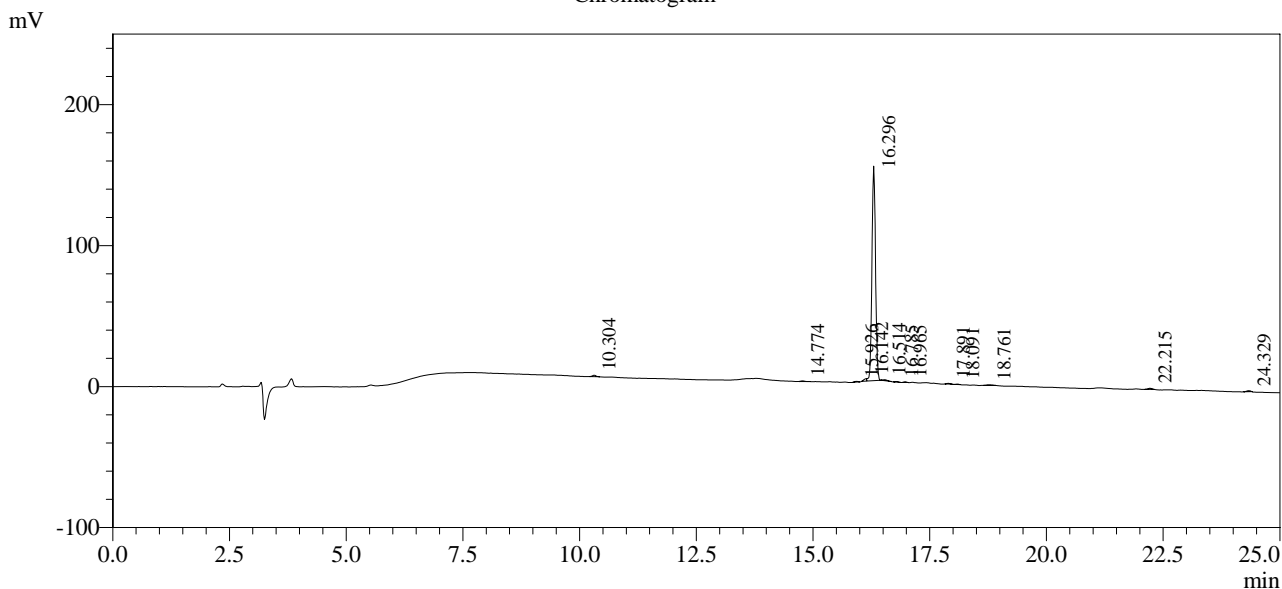
Time	Unit	Command	Value	Comment
0.01	Pumps	Pump B Conc.	5	
25.00	Pumps	Pump B Conc.	65	
25.01	Pumps	Pump B Conc.	95	
27.00	Pumps	Pump B Conc.	95	
27.01	Pumps	Pump B Conc.	5	
35.00	Pumps	Pump B Conc.	5	
35.01	Controller	Stop		

<<Column Performance>>

<Detector A>

Column : Alltima™ C18 4.6 x 250 mm

Chromatogram



1 Det.A Ch1 / 220nm

Peak Table

Detector A Ch1 220nm

Peak#	Ret. Time	Area	Height	Area %
1	10.304	5201	989	0.605
2	14.774	2662	475	0.309
3	15.926	2559	556	0.297
4	16.142	7479	1761	0.869
5	16.296	818564	152173	95.146
6	16.514	4804	648	0.558
7	16.785	1797	427	0.209
8	16.965	2171	513	0.252
9	17.891	2097	451	0.244
10	18.091	937	251	0.109
11	18.761	3349	421	0.389
12	22.215	4528	775	0.526
13	24.329	4172	774	0.485
Total		860321	160213	100.000