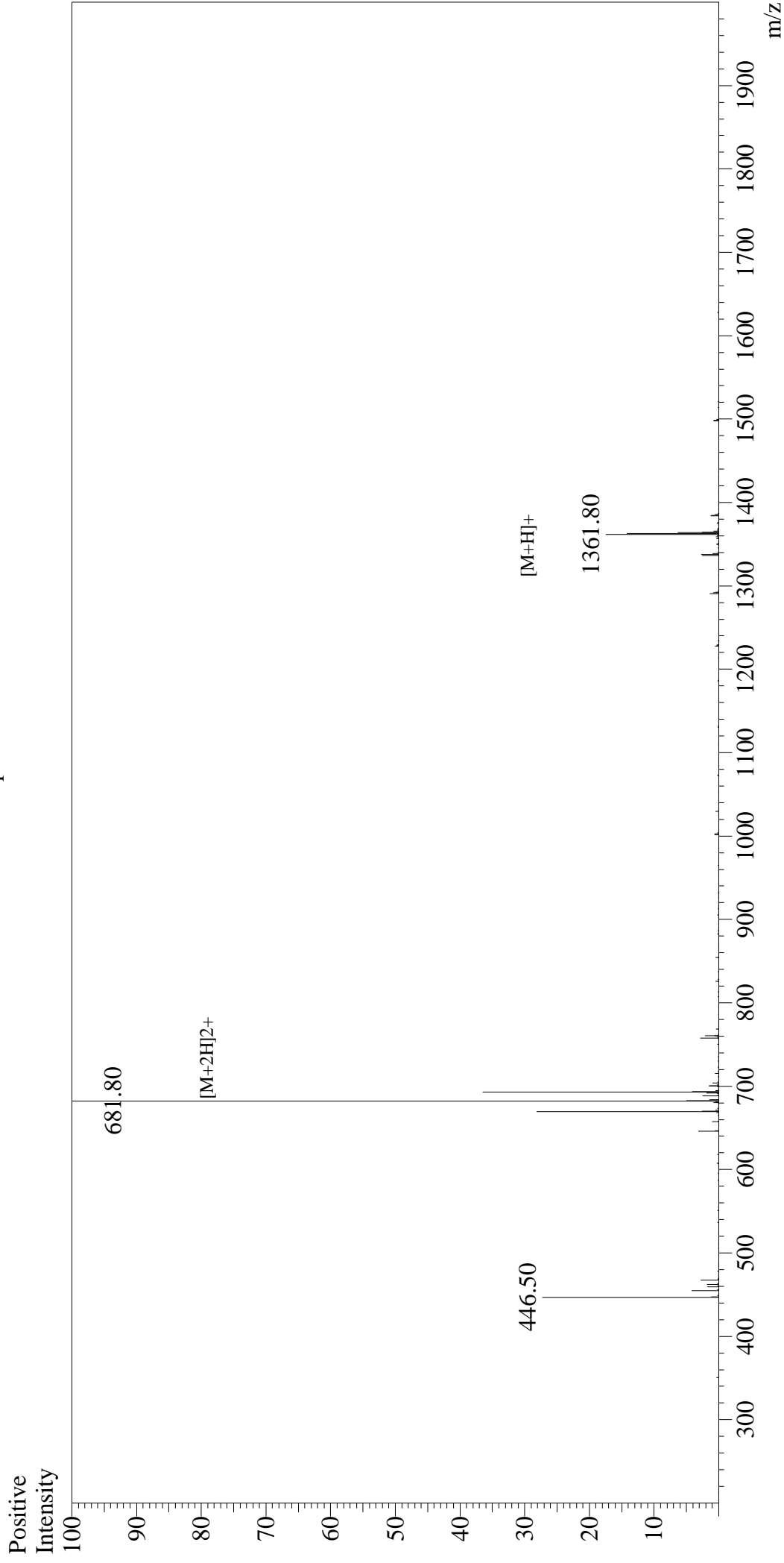


# Mass Spectrum



## Sample Information

User : Gary  
Month-Day Processed : 11/02/16  
Time Processed : 9:55:53  
Injection Volume : 0.2  
Sample Name : [Sar<sup>9</sup>]-S substance P  
Cat No. : RP10210  
Lot No. : PE4991610  
Theoretical MW : 1361.66  
Observed MW : 1361.60

Interface : ESI  
Nebulizing Gas Flow : 1.5L/min  
CDL Temp : 250°C  
Block Temp : 200°C

Interface Bias : +4.5kV  
Drying Gas Flow : 5 L/min  
T.Flow : 0.2ml/min  
B.conc : 50%H2O/50%MeOH