

Sample Name : [Sar⁹]-Substance P
 Cat. No. : RP10210
 Lot. No. : PE4991610

Pump A : 0.065% trifluoroacetic in 100% water (v/v)
 Pump B : 0.05% trifluoroacetic in 100% acetonitrile (v/v)
 Total Flow:1 ml/min
 Wavelength:220 nm

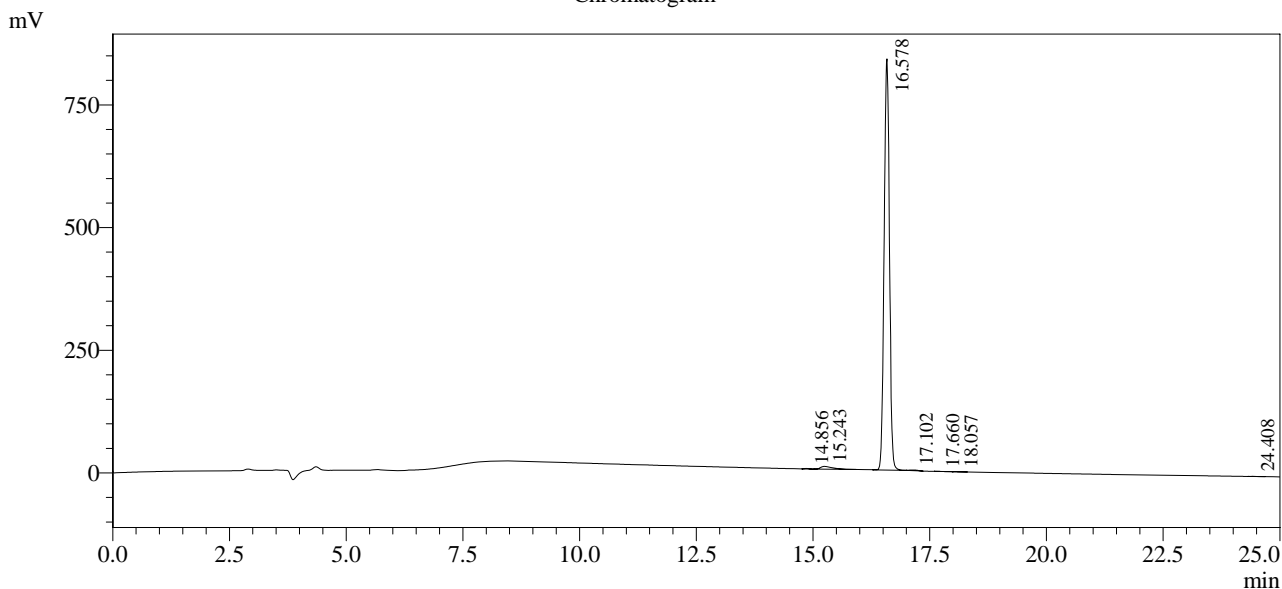
Time	Unit	Command	Value	Comment
0.01	Pumps	Pump A B.Conc	5	
25.00	Pumps	Pump A B.Conc	65	
25.01	Pumps	Pump A B.Conc	95	
31.00	Pumps	Pump A B.Conc	95	
31.01	Pumps	Pump A B.Conc	5	
40.00	Pumps	Pump A B.Conc	5	
40.10	Controller	Stop		

<<Column Performance>>

<Detector A>

Column : Alltima™ C18 4.6 x 250 mm

Chromatogram



1 Det.A Ch1 / 220nm

Peak Table

Detector A Ch1 220nm

Peak#	Ret. Time	Area	Height	Area %
1	14.856	5453	931	0.081
2	15.243	98293	5581	1.452
3	16.578	6643650	838147	98.152
4	17.102	16173	1179	0.239
5	17.660	1461	180	0.022
6	18.057	1718	173	0.025
7	24.408	1961	209	0.029
Total		6768709	846399	100.000