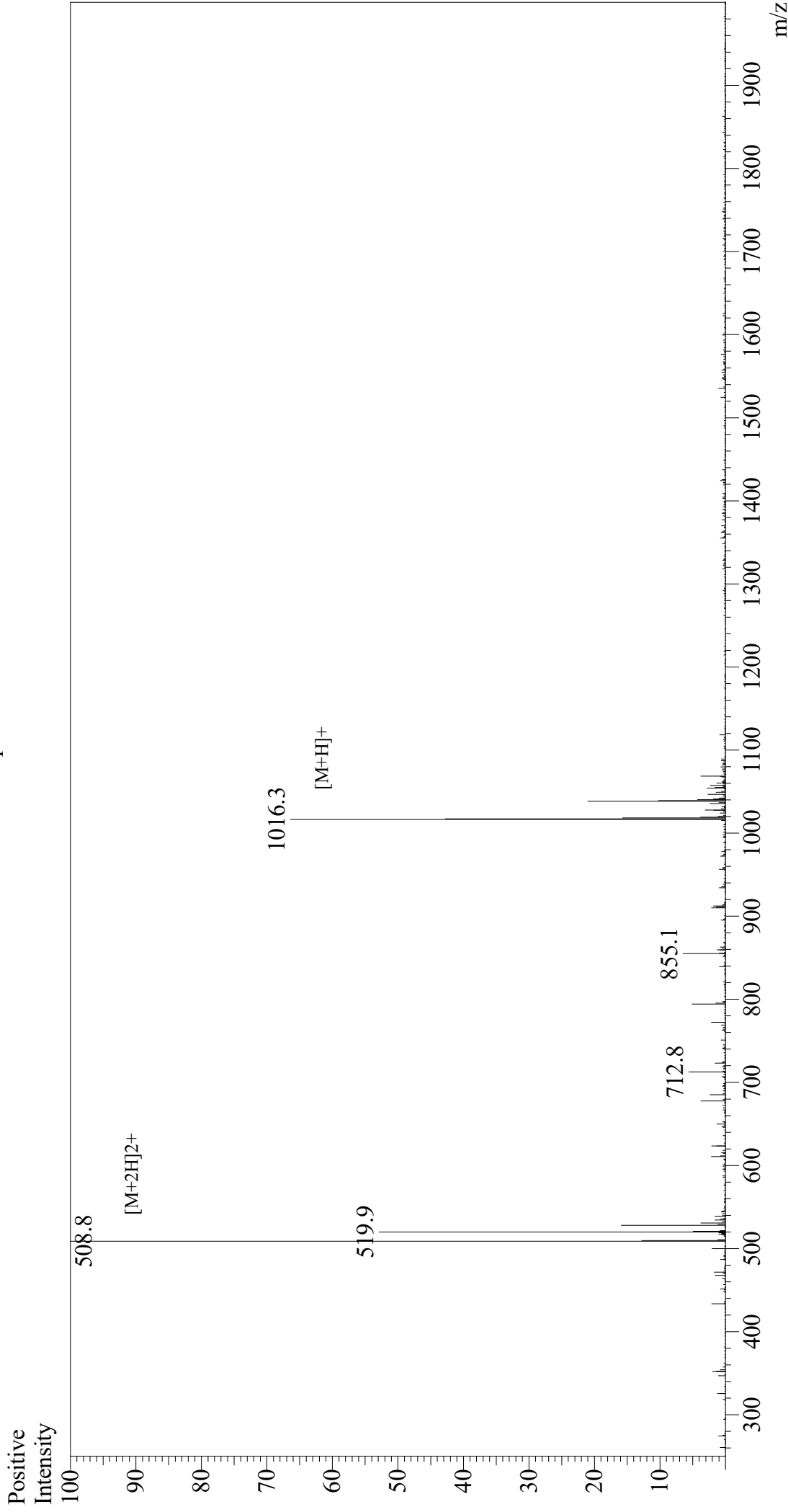


# Mass Spectrum



## Sample Information

Month-Day Processed : 12/26/20  
Time Processed : 9:36:51 PM  
Injection Volume : 0.4  
Sample Name : GP (33-41)  
Cat No. : RP20091  
Lot No. : E7166820L  
Theoretical MW : 1016.18  
Observed MW : 1015.6

Interface : ESI  
Nebulizing Gas Flow : 1.5L/min  
CDL Temp : 250  
Block Temp : 200

Equipment : GK11010007  
Interface Bias : +3.5 kV  
Drying Gas Flow : 5 L/min  
T.Flow : 0.2 ml/min  
B.conc : 50%H2O/50%MeOH