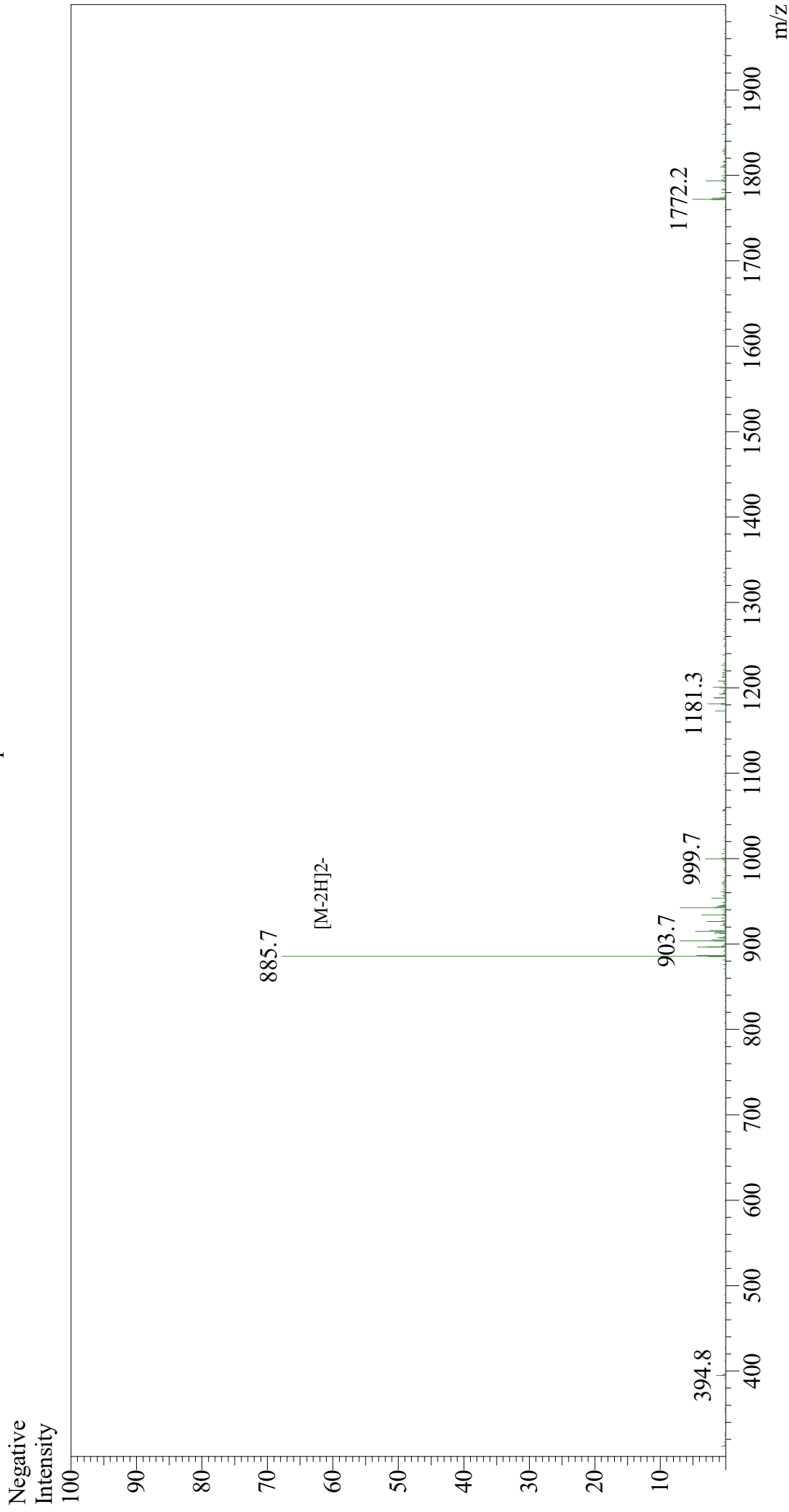


# Mass Spectrum



Sample Information  
Month-Day Processed : 06/23/21  
Time Processed : 7:24:03  
Injection Volume : 0.4  
Sample Name : OVA Peptide (323-339)  
Cat No : RP10610  
Lot No : E8663521F  
Theoretical MW : 1773.91  
Observed MW : 1773.4

Interface : ESI  
Nebulizing Gas Flow : 1.5L/min  
CDL Temp : 250  
Block Temp : 200

Equipment : GK11010007  
Interface Bias : -3.5 kV  
Drying Gas Flow : 5 L/min  
T.Flow : 0.2 ml/min  
B.conc : 50%H2O/50%MeOH