

Sample Name: [Sar9]-Substance P
 Cat No. : RP10210
 Lot No. : E4709919I
 Time Processed: 6:02:25 PM
 Month-Day-Year Processed :09/24/2019

Pump A : 0.065% trifluoroacetic in 100% water (v/v)
 Pump B : 0.05% trifluoroacetic in 100% acetonitrile (v/v)
 Total Flow: 1 ml/min
 Wavelength: 220 nm

<<LC Time Program>>

Time	Module	Command	Value
0.01	Pumps	Solvent B Conc.	5
25.00	Pumps	Solvent B Conc.	65
25.01	Pumps	Solvent B Conc.	95
27.00	Pumps	Solvent B Conc.	95
27.01	Pumps	Solvent B Conc.	5
33.00	Pumps	Solvent B Conc.	5
33.00	Controller	Stop	

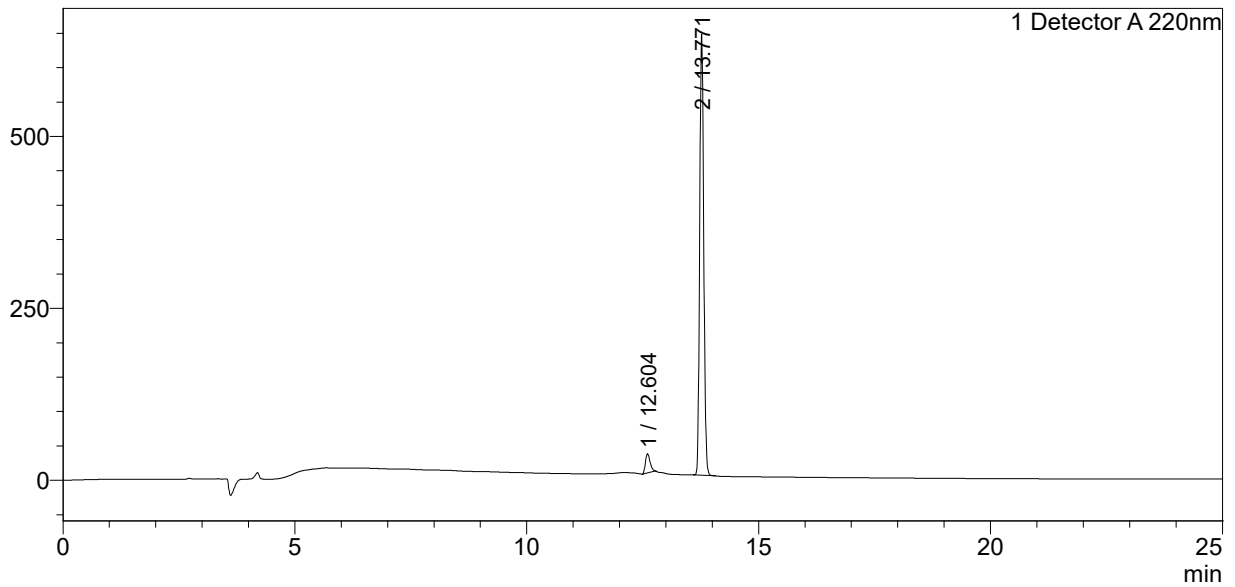
<<Column Performance>>

<Detector A>

Column : Alltima™ C18 4.6 x 250 mm
 Equipment: ZJ19010325

<Chromatogram>

mV



<Peak Table>

Detector A 220nm

Peak#	Ret. Time	Area	Height	Area%
1	12.604	196125	27767	4.812
2	13.771	3879991	641200	95.188
Total		4076116	668967	100.000