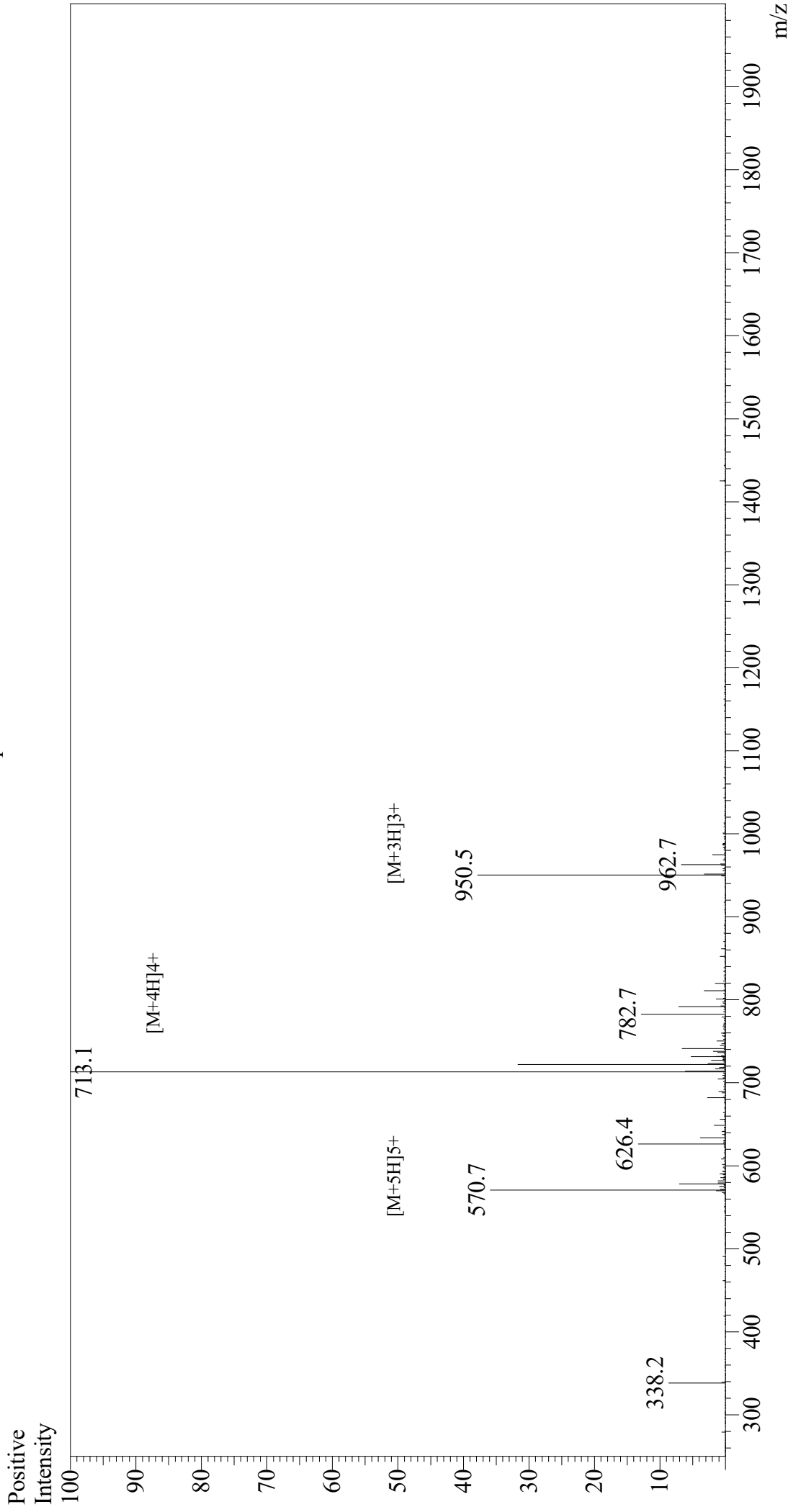


# Mass Spectrum



Sample Information  
Month-Day Processed : 03/11/21  
Time Processed : 9:06:56 AM  
Injection Volume : 0.4  
Sample Name : Pep-1 (uncapped)  
Cat No. : RP10130  
Lot No. : E2191121C  
Theoretical MW : 2848.30  
Observed MW : 2848.4

Interface : ESI  
Nebulizing Gas Flow : 1.5L/min  
CDL Temp : 250  
Block Temp : 200

Equipment : GK11010007  
Interface Bias : +3.5 kV  
Drying Gas Flow : 5 L/min  
T.Flow : 0.2 ml/min  
B.conc : 50%H<sub>2</sub>O/50%MeOH