

Sample Name: LAH4  
 Cat No: RP20096  
 Lot No : E7210520L  
 Time Processed: 7:09:22  
 Month-Day-Year Processed :12/24/2020

Pump A : 0.065% trifluoroacetic in 100% water (v/v)  
 Pump B : 0.05% trifluoroacetic in 100% acetonitrile (v/v)  
 Total Flow:1 ml/min  
 Wavelength:220 nm

<<LC Time Program>>

| Time  | Module     | Command         | Value |
|-------|------------|-----------------|-------|
| 0.01  | Pumps      | Solvent B Conc. | 5     |
| 25.00 | Pumps      | Solvent B Conc. | 65    |
| 25.01 | Pumps      | Solvent B Conc. | 95    |
| 27.00 | Pumps      | Solvent B Conc. | 95    |
| 27.01 | Pumps      | Solvent B Conc. | 5     |
| 35.00 | Pumps      | Solvent B Conc. | 5     |
| 35.01 | Controller | Stop            |       |

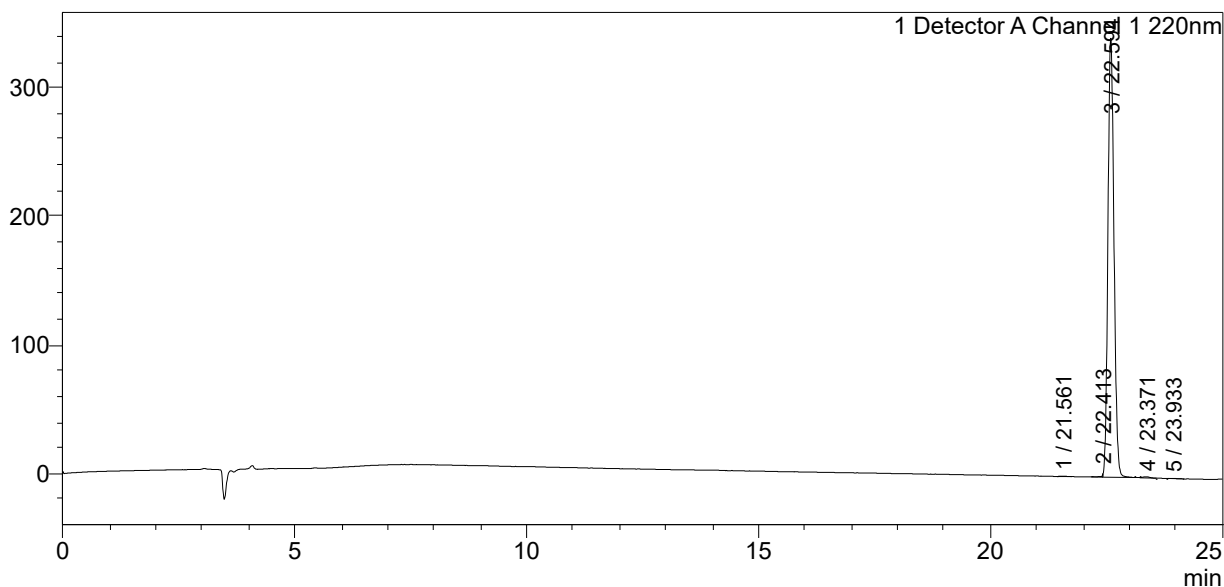
<<Column Performance>>

<Detector A>

Column : AlltimaTM C18 4.6 x 250 mm  
 Equipment:ZJ17010509

<Chromatogram>

mV



<Peak Table>

Detector A Channel 1 220nm

| Peak# | Ret. Time | Area    | Height | Area%   |
|-------|-----------|---------|--------|---------|
| 1     | 21.561    | 3233    | 352    | 0.104   |
| 2     | 22.413    | 4154    | 970    | 0.133   |
| 3     | 22.594    | 3102370 | 341358 | 99.438  |
| 4     | 23.371    | 8415    | 849    | 0.270   |
| 5     | 23.933    | 1722    | 194    | 0.055   |
| Total |           | 3119894 | 343723 | 100.000 |