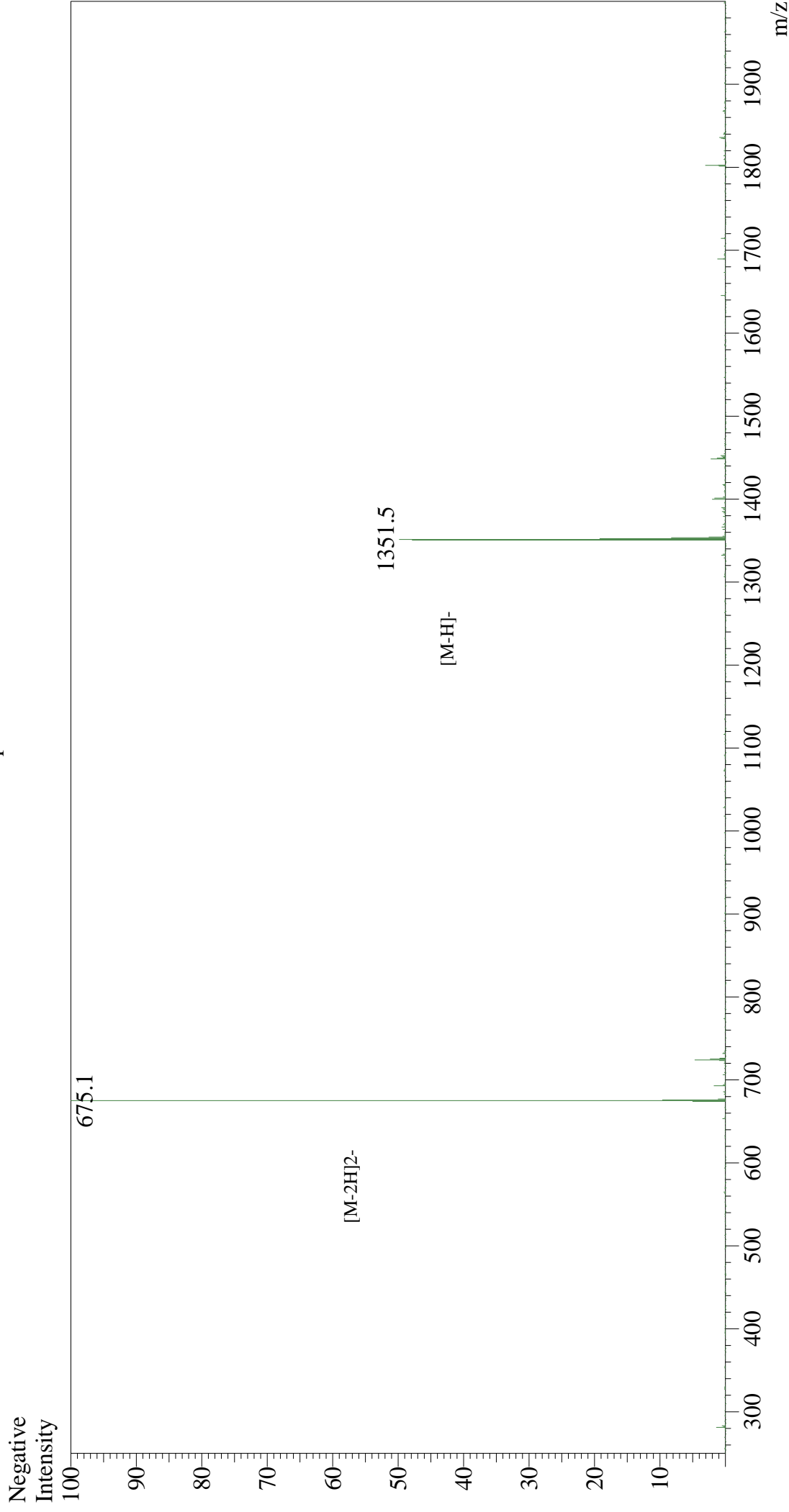


Mass Spectrum



Sample Information

User : Gary
Month-Day Processed : 09/20/19
Time Processed : 9:13:12
Injection Volume : 0.4
Sample Name : Glucagon (19-29), human
Cat No. : RP10770
Lot No. : E4671419I
Theoretical MW : 1352.52
Observed MW : 1352.2

Interface : ESI
Nebulizing Gas Flow : 1.5L/min
CDL Temp : 250
Block Temp : 200

Equipment : GK11010007
Interface Bias : -3.5 kV
Drying Gas Flow : 5 L/min
T.Flow : 0.2 ml/min
B.conc : 50%H₂O/50%MeOH