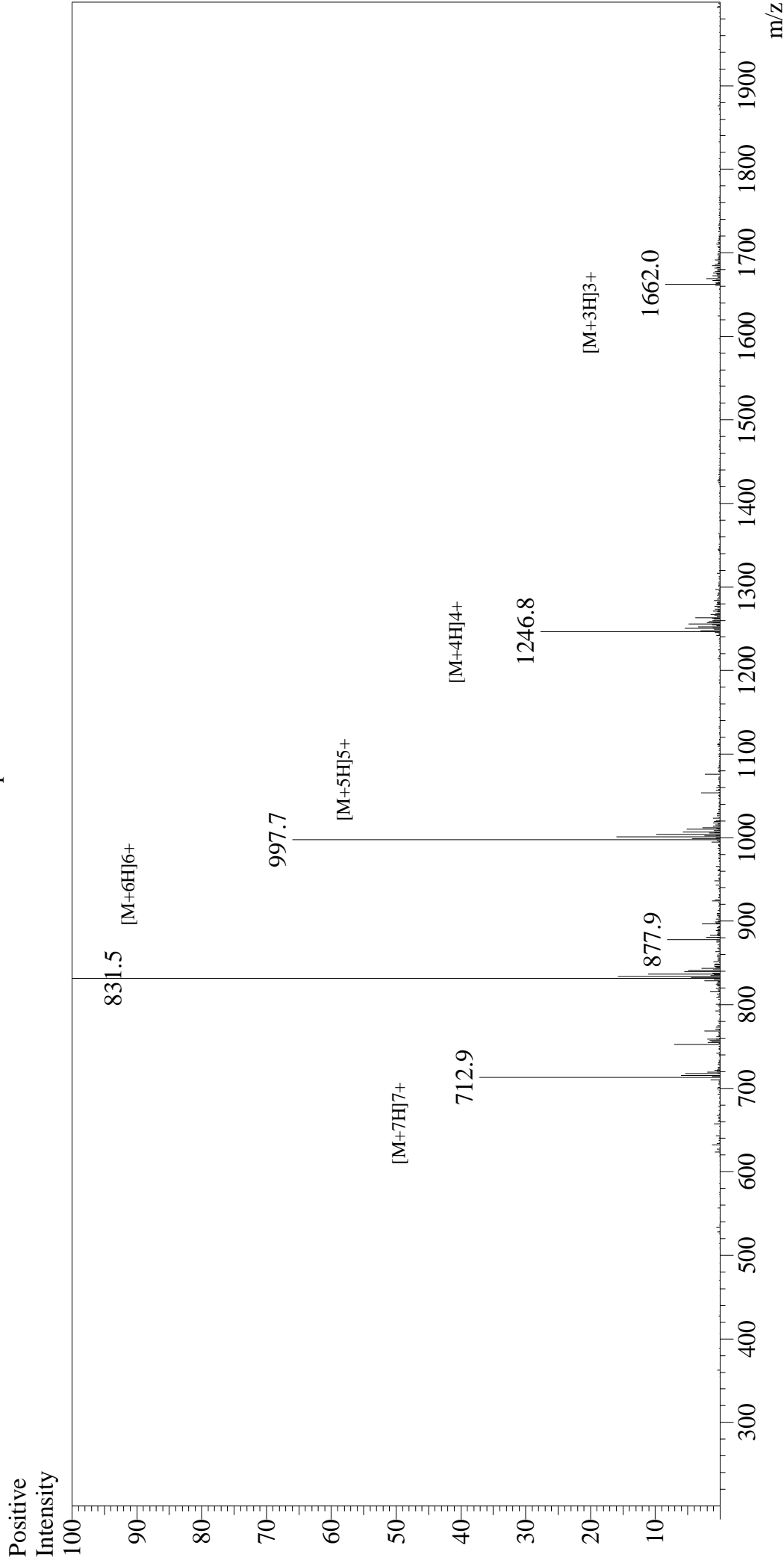


Mass Spectrum



Sample Information

User : Gary
Month-Day Processed : 10/27/18
Time Processed : 13:43:14
Injection Volume : 0.4
Sample Name : Gastric Inhibitory Peptide (GIP), human
Cat No. : RPI0795
Lot No. : PE4731810
Theoretical MW : 4983.6
Observed MW : 4983.0

Interface : ESI
Nebulizing Gas Flow : 1.5L/min
CDL Temp : 250°C
Block Temp : 200°C

Equipment : GK11010007
Interface Bias : +4.5kV
Drying Gas Flow : 5 L/min
T.Flow : 0.2ml/min
B.conc : 50%H2O/50%MeOH