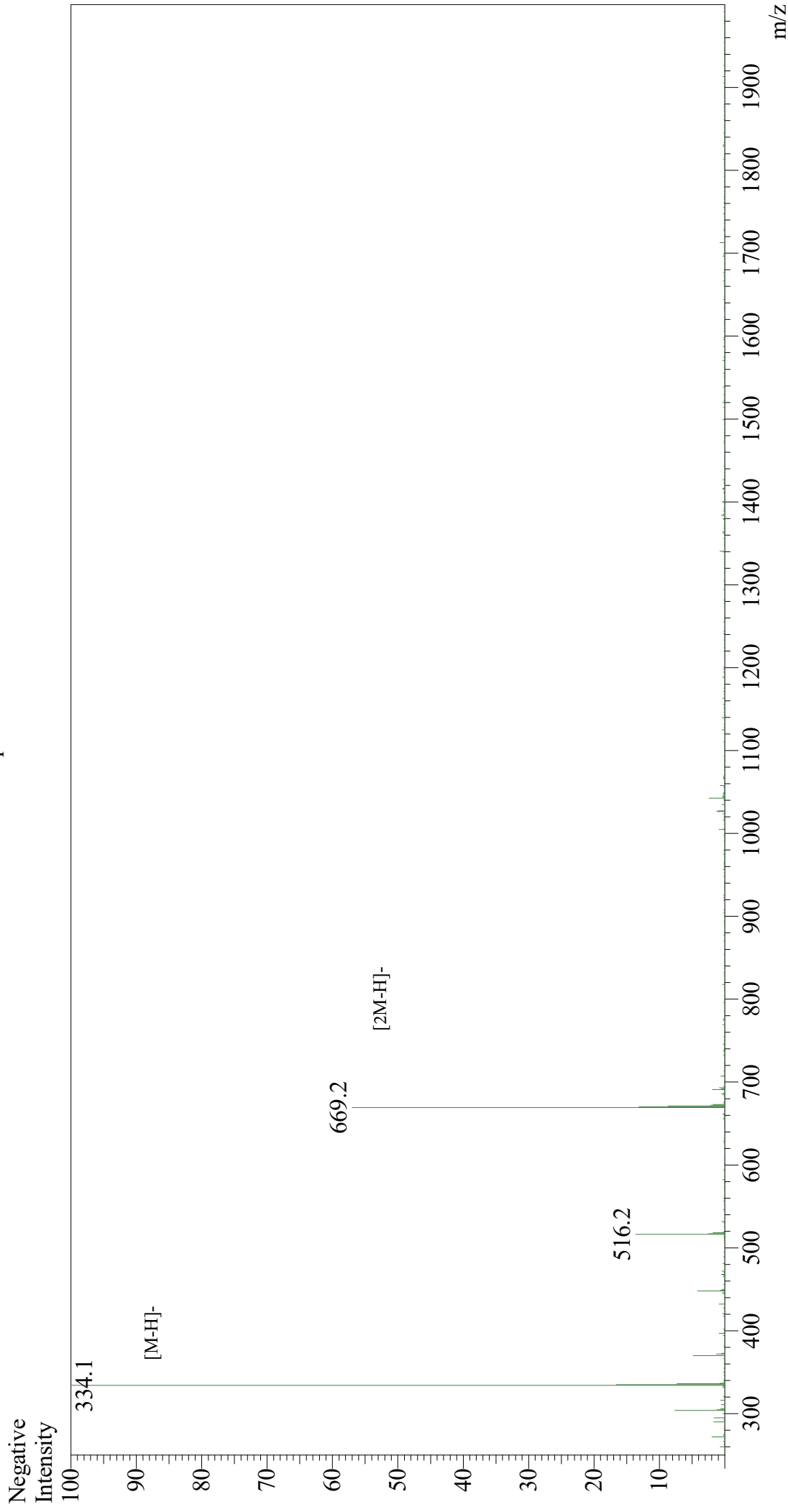


Mass Spectrum



Sample Information

User : Gary
Month-Day Processed : 07/04/19
Time Processed : 06:29:23 PM
Injection Volume : 0.3
Sample Name : N-Formyl-L-Met-Ala-Ser
Cat. No. : RP10587
Lot. No. : F321419F
Theoretical MW : 335.40
Observed MW : 335.1

Interface : ESI
Nebulizing Gas Flow : 1.5L/min
CDL Temp : 250
Block Temp : 200

Equipment : GK11010007
Interface Bias : -3.5 kV
Drying Gas Flow : 5 L/min
T.Flow : 0.2 ml/min
B.conc : 50%H2O/50%MeOH