

Sample Name :N-Formyl-Met-Ala-Ser  
 Cat. No. :RP10587  
 Lot. No. :E3214219F

Time Processed : 14:02:05  
 Month-Day-Year Processed :07/06/2019

Pump A : 0.065% trifluoroacetic in 100% water (v/v)  
 Pump B : 0.05% trifluoroacetic in 100% acetonitrile (v/v)  
 Total Flow:1 ml/min  
 Wavelength:220 nm

<<LC Time Program>>

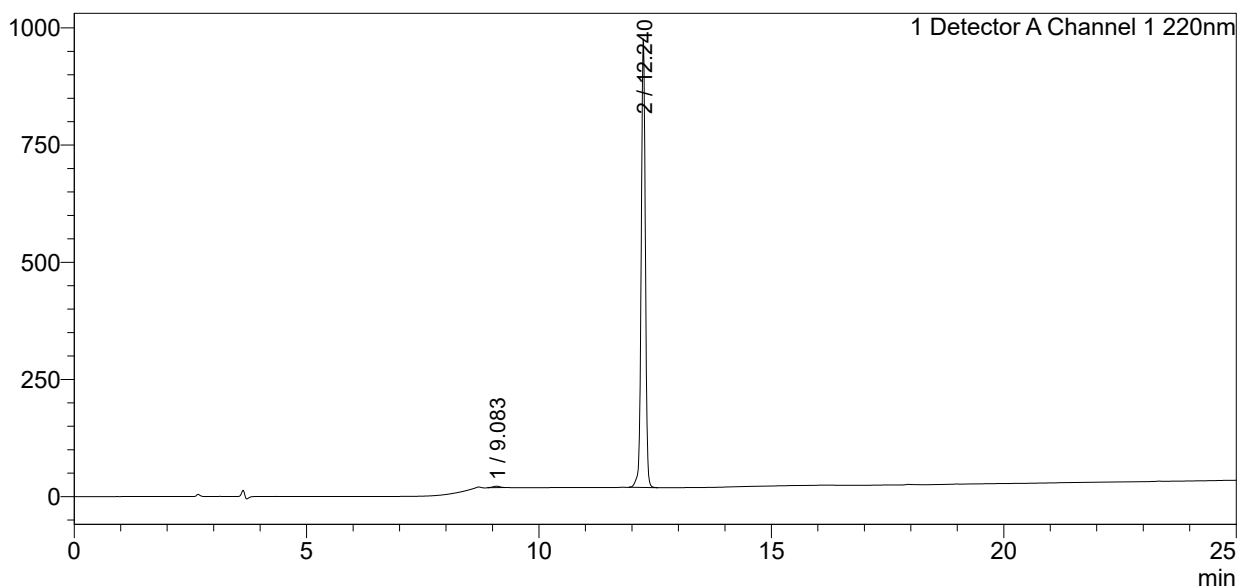
Time	Module	Command	Value
0.01	Pumps	Pump A B.Conc	0
25.00	Pumps	Pump A B.Conc	50
25.01	Pumps	Pump A B.Conc	95
32.00	Pumps	Pump A B.Conc	95
32.01	Pumps	Pump A B.Conc	0
40.00	Pumps	Pump A B.Conc	0
40.00	Controller	Stop	

<<Column Performance>>

<Detector A>  
 Column : AlltimaTM C18 4.6 x 250 mm  
 Equipment:ZJ17010507

### <Chromatogram>

mV



### <Peak Table>

Detector A Channel 1 220nm

Peak#	Ret. Time	Area	Height	Area%
1	9.083	30775	3011	0.515
2	12.240	5944217	957007	99.485
Total		5974992	960018	100.000