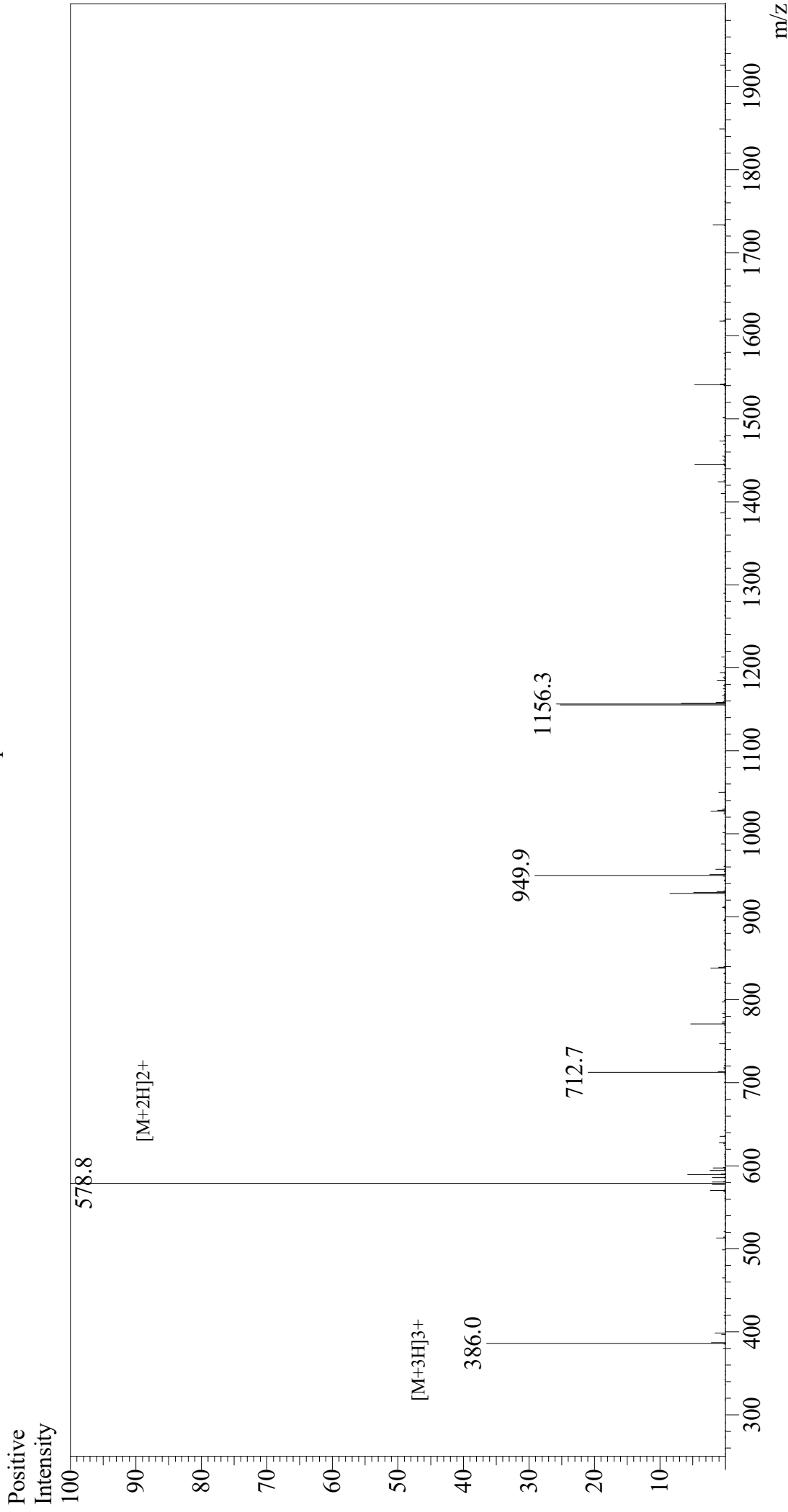


# Mass Spectrum



Sample Information  
Month-Day/Processed : 06/18/21  
Time Processed : 17:45:34  
Injection Volume : 0.4  
Sample Name : hgp100(25-33)  
Cat No. : RE20344  
Lot No. : E8898721F  
Theoretical MW : 1155.30  
Observed MW : 1155.6

Interface : ESI  
Nebulizing Gas Flow : 1.5L/min  
CDL Temp : 250  
Block Temp : 200

Equipment : GK11010007  
Interface Bias : +3.5 kV  
Drying Gas Flow : 5 L/min  
T.Flow : 0.2 ml/min  
B.conc : 50%H2O/50%MeOH