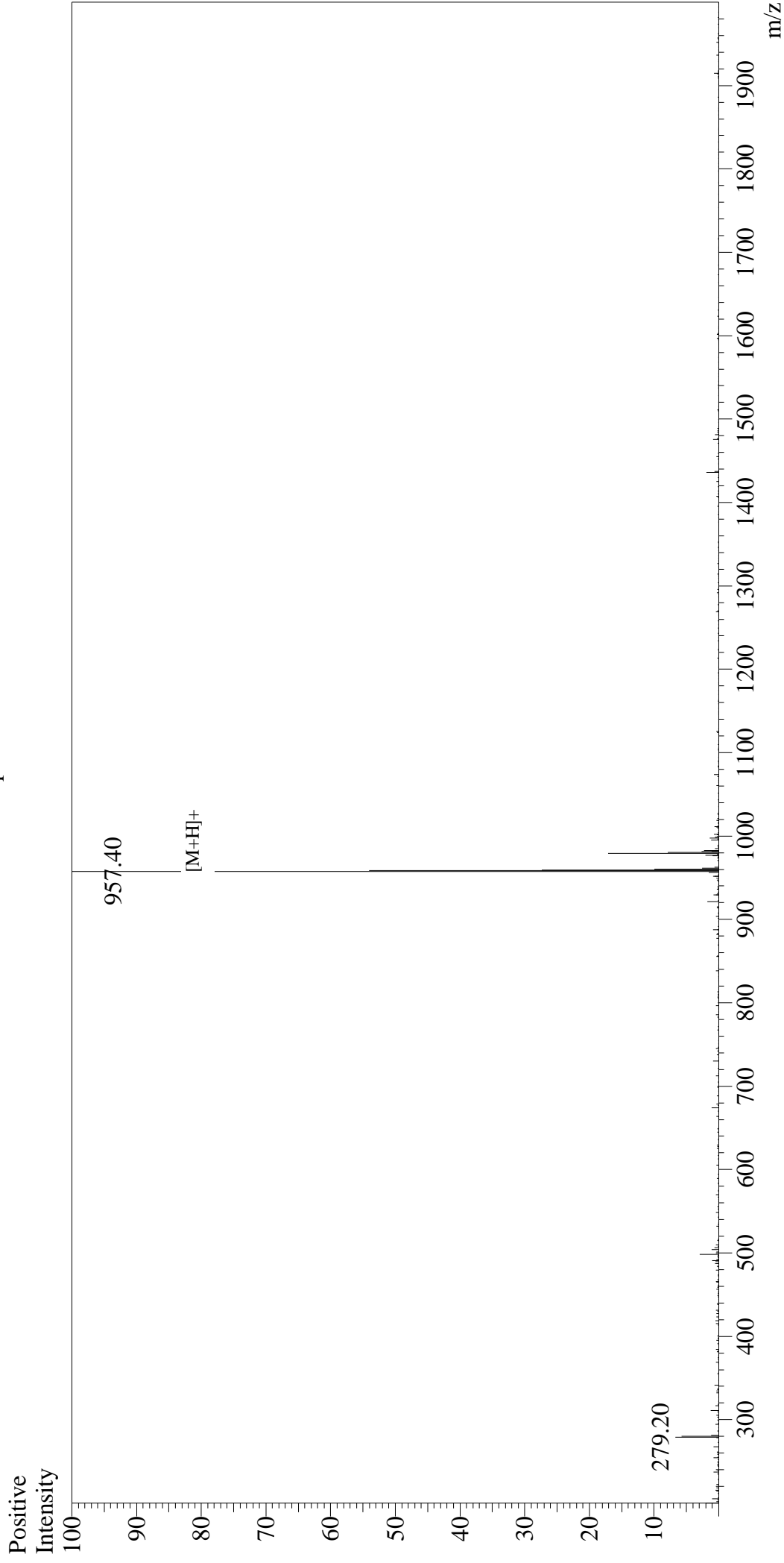


Mass Spectrum



Sample Information

User : Gary
Month-Day Processed : 07/06/17
Time Processed : 12:40:42
Injection Volume : 0.2
Sample Name : Crustacean Cardioactive Peptide (CCAP)
Cat No. : RPI0572
Lot No. : PE7971707
Theoretical MW : 957.10
Observed MW : 956.40

Interface : ESI
Nebulizing Gas Flow : 1.5L/min
CDL Temp : 250°C
Block Temp : 200°C

Interface Bias : +4.5kV
Drying Gas Flow : 5 L/min
T.Flow : 0.2ml/min
B.conc : 50%H₂O/50%MeOH