

Sample Name :β-Amyloid (29-40)
 Cat. No. : RP20178 Lot. No. : PE1861810
 Time Processed : 16:54:08
 Month-Day-Year Processed : 10/20/2018

Pump A : 0.065% trifluoroacetic in 100% water (v/v)
 Pump B : 0.05% trifluoroacetic in 100% acetonitrile (v/v)
 Total Flow: 1 ml/min
 Wavelength: 220 nm

| Time | Unit | Command | Value | Comment |
|-------|------------|---------------|-------|---------|
| 0.01 | Pumps | Pump A B.Conc | 15 | |
| 25.00 | Pumps | Pump A B.Conc | 75 | |
| 25.01 | Pumps | Pump A B.Conc | 95 | |
| 32.00 | Pumps | Pump A B.Conc | 95 | |
| 32.01 | Pumps | Pump A B.Conc | 15 | |
| 40.00 | Pumps | Pump A B.Conc | 15 | |
| 40.01 | Controller | Stop | | |

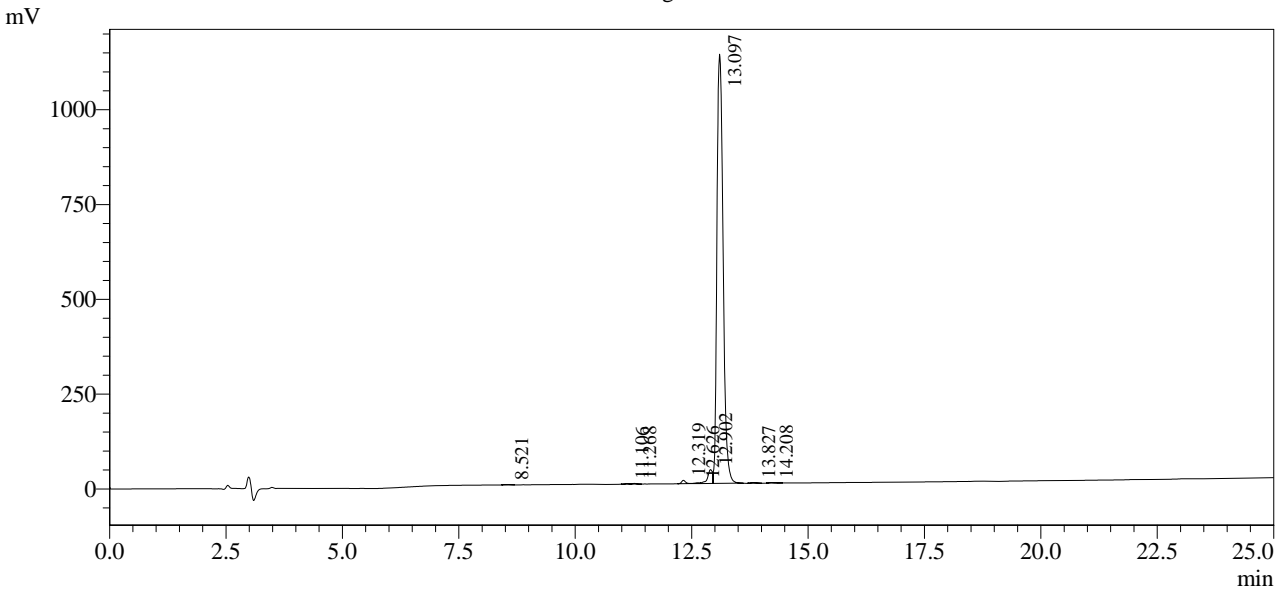
<<Column Performance>>

<Detector A>

Column : Inertsil ODS-3 4.6 x 250 mm

Equipment: G09010878

Chromatogram



1 Det.A Ch1 / 220nm

Peak Table

Detector A Ch1 220nm

| Peak# | Ret. Time | Area | Height | Area % |
|-------|-----------|----------|---------|---------|
| 1 | 8.521 | 7823 | 1045 | 0.073 |
| 2 | 11.106 | 8296 | 1439 | 0.077 |
| 3 | 11.268 | 9189 | 1645 | 0.085 |
| 4 | 12.319 | 52048 | 8899 | 0.483 |
| 5 | 12.626 | 17953 | 2180 | 0.167 |
| 6 | 12.902 | 264144 | 36488 | 2.453 |
| 7 | 13.097 | 10391896 | 1131622 | 96.489 |
| 8 | 13.827 | 7260 | 1315 | 0.067 |
| 9 | 14.208 | 11401 | 1424 | 0.106 |
| Total | | 10770010 | 1186057 | 100.000 |