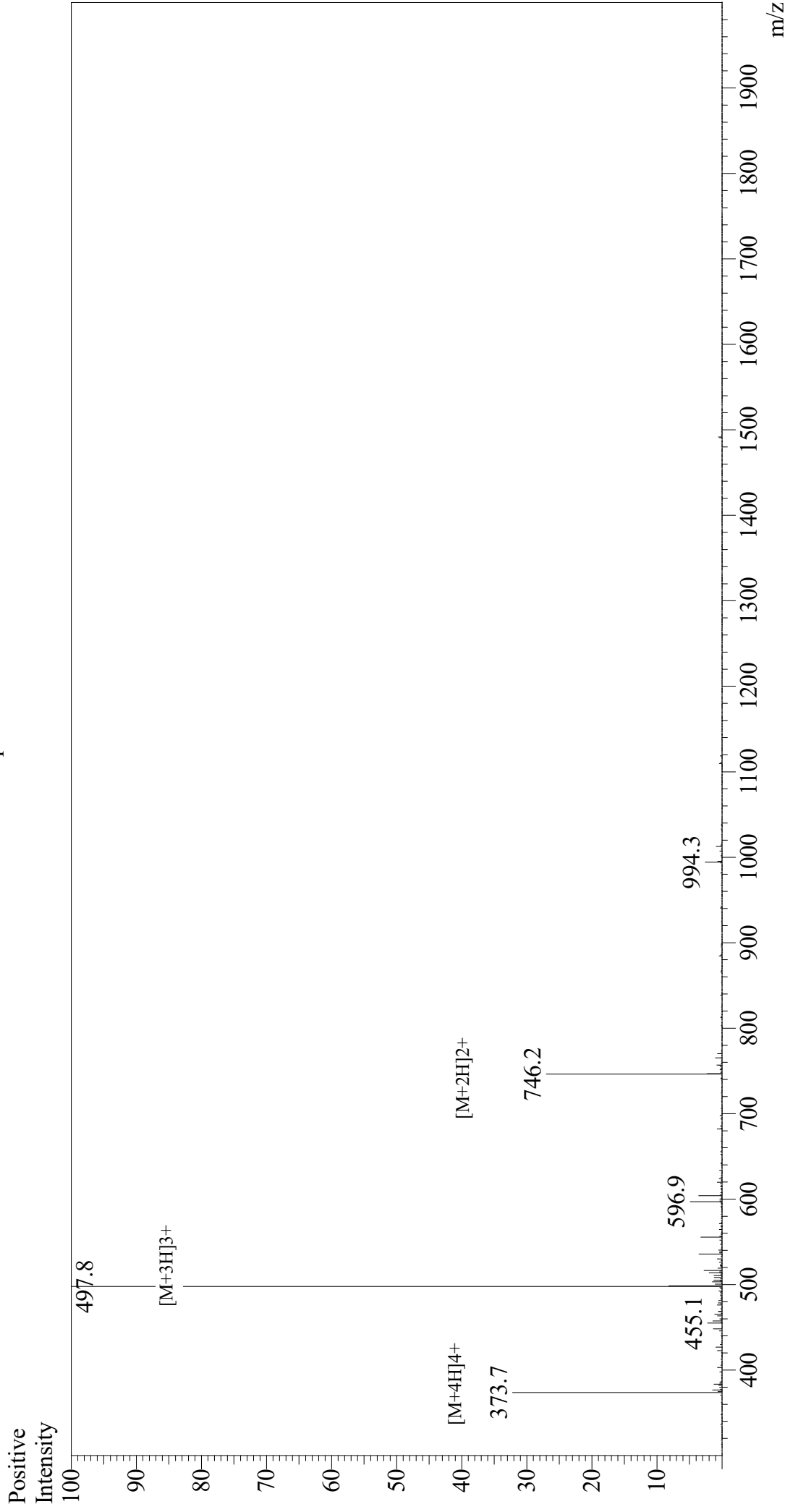


Mass Spectrum



Sample Information

Acquired by : Gary
 Month-Day Processed : 02/28/20
 Time Processed : 09:46:42 AM
 Injection Volume : 0.5
 Sample Name : SV40 T-Ag-derived NLS peptide
 Cat. No. : RP20513
 Lot. No. : E2885320B
 Theoretical MW : 1490.80
 Observed MW : 1490.4

Interface : ESI
 Nebulizing Gas Flow : 1.5L/min
 CDL Temp : 250
 Block Temp : 200

Equipment : GK11010007
 Interface Bias : +4.5 kV
 Drying Gas Flow : 5 L/min
 T.Flow : 0.2 ml/min
 B.conc : 50% H2O/50% MeOH