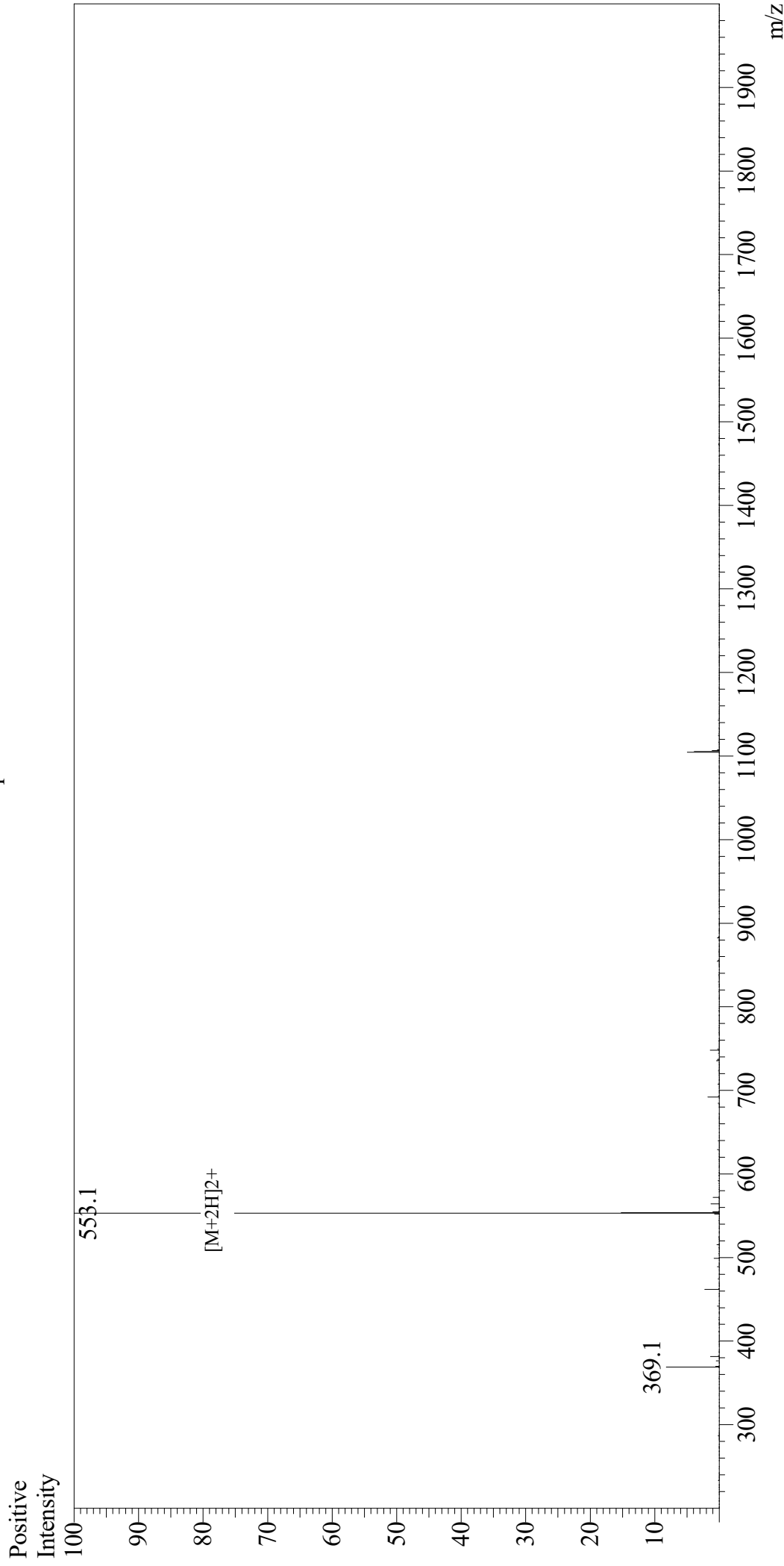


Mass Spectrum



Sample Information

User : Gary
Month-Day Processed : 09/18/19
Time Processed : 03:38:40 PM
Injection Volume : 0.3
Sample Name : Substance P (1-9)
Cat No. : RP10181
Lot No. : E4689319I
Theoretical MW : 1104.30
Observed MW : 1104.2

Interface : ESI
Nebulizing Gas Flow : 1.5L/min
CDL Temp : 250
Block Temp : 200

Equipment : GK11010007
Interface Bias : +4.5kV
Drying Gas Flow : 5 L/min
T.Flow : 0.2ml/min
B.conc : 50%H₂O/50%MeOH